



**Rutherford
County Schools**

**2240 Southpark Drive
Murfreesboro, TN 37128**

**MAY 14, 2026
3:30 P.M.**

AGENDA

1. CALL TO ORDER

2. PLEDGE OF ALLEGIANCE & MOMENT OF SILENCE/PRAYER

We will be opening the meeting with a brief moment of silence or prayer and the pledge of allegiance to the United States flag. No one is required to participate or be present for any of these and being in this portion of the meeting is completely voluntary.

Work Session: Caleb Tidwell

Board Meeting: Caleb Tidwell

3. APPROVAL OF AGENDA

Recommended Motion - to approve the agenda as presented.

4. APPROVAL OF CONSENT AGENDA (TAB 1)

A. Minutes: Board Meeting Minutes, April 23, 2026
Special Called Minutes, May 7, 2026

B. Nepotism: Rhonda McGee – Sped EA – Poplar Hill Middle
Kennedy Gooch – Teacher – Rocky Fork Elementary

C. Bids: Bid #3860 - Cabinets and Countertops,
Bid #3861 - PE Equipment (Poplar Hill Middle),
Bid #3862 - Kitchen Small Wares (Poplar Hill Middle)

D. Use of Facilities:

FACILITIES USE

5/14/2026

Fees

Blackman High	U.S. Elite Baseball, practice, sports field, 5/28/26 – 10/31/26, \$18 per hour
Central Magnet	NAK Martial Arts LLC, belt graduation, gym, 6/27/26 – 12/19/26, \$290 per day
Central Magnet	2D Sports, baseball tournaments, sports field, 5/28/26 – 10/25/26, \$290 per day.
Lascassas Elementary	Mission Baseball, practice, sports field, 5/19/26 – 7/9/26, \$18 per hour
Oakland Middle	Middle TN Bball Showcase, basketball tournament, gym, 5/15/26 – 6/30/26, \$18 per hour
Riverdale High	Nashville United Soccer Academy, tryouts, soccer field, 5/14/26 – 5/28/26, \$18 per hour
Roy Waldron Elementary	Holland Ridge HOA, meeting, cafeteria, 5/27/26, \$36
Siegel High	Debbie's School of Dance, dance recital, classrooms & auditorium, 6/18/26 – 6/20/26, \$3496.67
Siegel Middle	Boro Bombers, baseball practice, sports field, 5/19/26 – 7/30/26, \$18 per hour
Smyrna High	2D Sports Baseball, tournaments, sports field, 5/28/26 – 11/1/26, \$18 per hour
Smyrna High	MidTenn Friday Night Football, football camp, stadium, 6/27/26, \$100 per hour

No Fees

Riverdale High	Center for Excellence, basketball training, gym, 5/19/26 – 7/28/26, no fees, *In-Kind Agreement
Riverdale High	TN blast, softball practice, sports field, 5/31/26 – 5/31/27, no fees, *In-Kind Agreement
Riverdale High	TN Select Sports, football camp, football field & field house, 5/15/26 – 5/16/26, no fees
Riverdale High	TN Team Pride, basketball practice, gym, 5/15/26 – 8/31/26, no fees, *In-Kind Agreement
Rock Springs Elementary	LaVergne Police Dept., community safety meeting, cafeteria, 6/24/26, no fees
Smyrna Middle	Steve Wilson Performance, sports camp, sports field, 6/1/26 – 6/3/26, no fees, *In-Kind Agreement

Note: Facility use prior to 5/14/26 has been granted pending Board action. A certificate of insurance with \$2,000,000.00 limits (\$1,000,000.00 if approved) is required by each user. Each group must forward any renewals of insurance to the Board on time; otherwise, approval is terminated at the end of the policy period. **All approvals are for no more than a 1-year period.**

E. Non-Faculty Coaches:

According to the Tennessee Secondary School Athletic Association (TSSAA) guidelines, Board of Education approval is required to allow non-faculty volunteer coaches to participate in the school athletic programs.

The following non-faculty volunteer coaches are for the 2026-2027 school year:

NAME	SCHOOL	ACTIVITY
Gregory, Kevin	Blackman High	Football
Nelms, Josh	Central Magnet	MS Baseball/HS Basketball
Bonds, Rodney	Christiana Middle	Girls Basketball
Bonte, Bailey	Christiana Middle	Softball
Bonte, Jeff	Christiana Middle	Softball
Greene, Jason	Christiana Middle	Baseball

Hedrick, Logan	Christiana Middle	Baseball
Lee, Kristopher	Christiana Middle	Boys Basketball
Phillips, Morgan	Christiana Middle	Archery
Saller, Steve	Christiana Middle	Wrestling
Sugg, Savannah	Christiana Middle	Volleyball
Drown, Samantha	Oakland High	Volleyball
Gambill, Johnny	Oakland High	Football
Harwood, Ade	Oakland High	Cheer
Lean, Jeff	Oakland High	Boys Soccer
Vega-Gaskins, Raquel	Oakland High	Archery
Walters, Chad	Oakland High	Lacrosse
Tenca-Dunn, Taryn	Poplar Hill Middle	Dance
Clark, Edward	Riverdale High	Cross Country
Irarrazabal, Andres	Riverdale High	Boys Basketball
Johnson, Jaylen	Riverdale High	Boys Basketball
Newberry, Patsy	Riverdale High	Archery
Rapp, Jacob	Riverdale High	Volleyball
Thweatt, Bruce	Riverdale High	Volleyball/Tennis/Girls Basketball
Majors, Jermaine	Rockvale High	Football
Montgomery, Tyler	Rockvale High	Swimming
Toon, Caitlin	Rockvale High	Dance
Eslinger, Zach	Siegel High	Football
Scott, Demetri	Smyrna High	Football
King, Hadley	Whitworth Buchanan	Cheer

King, Lauren	Whitworth Buchanan	Cheer
Bouttavong, Tyler	Blackman High	Band
Bretsnyder, Cheryl	Blackman High	Band
Burton, Debra	Blackman High	Band
Chandler, Robert	Blackman High	Band
Chesnut, Thomas	Blackman High	Band
Davila, Julie	Blackman High	Band
Dudek, Keith	Blackman High	Band
Elliott, William	Blackman High	Band
England, David	Blackman High	Band
George, Michael	Blackman High	Band
Kigaita, Phillip	Blackman High	Band
Lawson, Gregory	Blackman High	Band
Lawson, Tonya	Blackman High	Band
Murphy, Rebecca	Blackman High	Band
Quallo, Jovan	Blackman High	Band
Rogers, Kelsey	Blackman High	Band
Sharpe, Wilson	Blackman High	Band
Simmons, James	Blackman High	Band
Smith, Holly	Blackman High	Band
Waldecker, Todd	Blackman High	Band
Ford, Jared	Siegel High	Band
Herrera, Carolina	Siegel High	Band
Johnson, Lee	Siegel High	Band

Murphy, Rebecca	Siegel High	Band
Ramsay, Kyle	Siegel High	Band
Rattanaovong, Benjamin	Siegel High	Band
Smith, Erich	Siegel High	Band
Sullivan, Eric	Siegel High	Band
Trauscht, Riley	Siegel High	Band
Webb, Garen	Siegel High	Band
Welch, Brady	Siegel High	Band
Rebstock, Amanda	Siegel High	Band

F. Salary Supplements and Contract Payments:

Name-Certified	NTE Amt.	School	Funded By	Description
David England	\$8,000.00	Blackman High School	BHS Band Boosters	Band Camp Staff & Percussion Instruction
Thomas Chesnut	\$600.00	Blackman High School	BHS Band Boosters	Band Camp Staff
Debra Burton	\$4,000.00	Blackman High School	BHS Band Boosters	Drill Writer
Kevin Meadows	\$1,500.00	Blackman High School	School Funds - Boys & Girls Soccer	Field Maintenance
Kevin Meadows	\$1,500.00	Blackman High School	School Funds - Football	Field Maintenance
Cuyler Lanier	\$2,500.00	Central Magnet	School Funds - Softball	Asst. Coach
Michael Overstreet	\$200 per occurrence plus taxes & ins.	Christiana Middle School	Use of Facilities	Facility Manager

Brittany Hedrick	\$200 per occurrence plus taxes & ins.	Christiana Middle School	Use of Facilities	Facility Manager
John Pippenger	\$1,155.00	Eagleville School	School Funds - Football	Summer Workouts
Billy Spann	\$1,155.00	Eagleville School	School Funds - Football	Summer Workouts
Derry Wells	\$1,500.00	Oakland High School	School Funds - Softball	Announcing
Brent Whitlock	\$3,800.00	Riverdale High School	School Funds - Baseball	Asst. Coach & Camp
Erin Walsh	\$500.00	Riverdale High School	School Funds - Boys Wrestling	Scorer
Bradford Deas	\$2,000.00	Riverdale High School	School Funds - Flag Football	Assistant Coach
Michael Bartlett	\$2,500.00	Rockvale High School	School Funds - Baseball	Assistant Baseball Coach
Zachary Harrison	\$3,000.00	Rockvale High School	School Funds - Baseball	Assistant Baseball Coach
David Looper	\$1,000.00	Rockvale High School	School Funds - Baseball	Baseball Bus Driver
Sarah Chambers	\$500.00	Rockvale Middle School	School Funds - Theater	Directing - The Little Mermaid, Jr.
Collin Peterson	\$400.00	Rockvale Middle School	School Funds - Theater	Music Directing - The Little Mermaid, Jr.
Brittney Shea	\$200.00	Rockvale Middle School	School Funds - Theater	Asst. Directing - The Little Mermaid, Jr.
David Landry	\$500.00	Rockvale Middle School.	School Funds - Boys Soccer	Asst. Coach
Ke'Aria Blount	\$1,000.00	Rocky Fork Middle School	School Funds - Boys & Girls Track	Assistant Coach
Jared Ford	\$5,000.00	Siegel High School	School Funds - Marching Band	Assisting with running summer/fall rehearsals

Casey Adams	\$500.00	Smyrna High School	School Funds - Boys & Girls Soccer	Field Maintenance
Gabriel Villareal	\$500.00	Smyrna High School	School Funds - Boys Soccer	Weight Training for Soccer Players
Mary Brockley	\$500.00	Smyrna High School	School Funds - Tennis	Assistant Coach
Jamir Eaton	\$500.00	Smyrna High School	School Funds - Athletics	Assistant Coach for Various Sports
Kira Vance	\$1,380.00	Smyrna Middle School	School Funds - Softball	Assistant Coach
Brian Waite	\$600.00	Stewarts Creek High School	School Funds - Girls Flag Football	Coaching/Supervision
Name-Non-Faculty	NTE Amt.	School	Funded By	Description
Tyler Bouttavong	\$600.00	Blackman High School	BHS Band Boosters	Band Camp Staff
Cheryl Bretsnyder	\$500.00	Blackman High School	BHS Band Boosters	Band Camp Staff
Robert Chandler	\$600.00	Blackman High School	BHS Band Boosters	Band Camp Staff
Julie Davila	\$500.00	Blackman High School	BHS Band Boosters	Percussion Instruction
Keith Dudek	\$800.00	Blackman High School	BHS Band Boosters	Drumline/Percussion
William Elliott	\$7,000.00	Blackman High School	BHS Band Boosters	Band Camp Staff & Private Lessons
Michael George	\$8,000.00	Blackman High School	BHS Band Boosters	Private Lessons
Gregory Lawson	\$600.00	Blackman High School	BHS Band Boosters	Band Camp Staff

Tonya Lawson	\$14,000.00	Blackman High School	BHS Band Boosters	Private Lessons
Rebecca Murphy	\$6,000.00	Blackman High School	BHS Band Boosters	Private Lessons
Jovan Quallo	\$7,000.00	Blackman High School	BHS Band Boosters	Private Lessons
Kelsey Rogers	\$8,000.00	Blackman High School	BHS Band Boosters	Color Guard Instructor
Wilson Sharpe	\$2,000.00	Blackman High School	BHS Band Boosters	Private Lessons
James Simmons	\$500.00	Blackman High School	BHS Band Boosters	Jazz Instruction
Todd Waldecker	\$500.00	Blackman High School	BHS Band Boosters	Band Camp Staff
Holly Smith	\$600.00	Blackman High School	BHS Band Boosters	Band Camp Staff
Phillip Kigaita	\$500.00	Blackman High School	BHS Band Boosters	Band Camp Staff
John Heathcott	\$2,000.00	Blackman High School	School Funds - Wrestling	Opening weight room & practice facility during the off season
Cassandra Willis	\$2,000.00	Blackman Middle School	School Funds - Track	Assistant Track Coach
Emma Parks	\$250.00	Blackman Middle School	School Funds - Bowling	Assistant Coach
Lori Walker	\$1,200.00	Central Magnet School	School Funds - Swim Team	Asst. Swim Team Coach
Stacie Richardson	\$2,973.88	Central Magnet School	School Funds - Archery	Archey Coach
Riley Russell	\$50-\$100 per occurrence	Christiana Middle School	School Funds - Band	Private Lessons

Christopher Thornhill	\$50-\$100 per occurrence	Christiana Middle School	School Funds - Band	Low Brass Private Lessons
Troy Valdary	\$500.00	Oakland High School	School Funds - Track	Assistant Coach
Jeffrey Lanning	\$5,000.00	Riverdale High School	School Funds - Baseball	Assistant Coach
Ashleigh Chambers	\$1,000.00	Rockvale Middle School	School Funds - Theater	Dance Club Choreography
Carolina Herrera	\$30 for .5 hour/\$50 full hour	Siegel High School	Siegel High Band Boosters	Teach students on a one-on-one basis every week
Lee Johnson	\$30/half hour lessons	Siegel High School	Siegel High Band Boosters	Clarinet lessons
Rebecca Murphy	\$30 per lesson	Siegel High School	Siegel High Band Boosters	Music (Flute) lessons
Kyle Ramsay	\$19,000.00	Siegel High School	Siegel High Band Boosters	Percussion Director
Benjamin Rattanaovong	\$30 per lesson	Siegel High School	Siegel High Band Boosters	One on one private professional musical instruction
Erich Smith	\$5,000.00	Siegel High School	Siegel High Band Boosters	Percussion tech/consultation
Eric Sullivan	\$25 per lesson	Siegel High School	Siegel High Band Boosters	Teaching lessons on weekly basis
Riley Trauseht	\$25 per 30 min lesson	Siegel High School	Siegel High Band Boosters	Private Lessons
Garen Webb	\$30 per lesson	Siegel High School	Siegel High Band Boosters	Private Lessons
Brady Welch	\$5,000.00	Siegel High School	Siegel High Band Boosters	Front Ensemble/Battery Tech/Teacher
Amanda Rebstock	\$28 per 30 minutes	Siegel High School	Siegel High Band Boosters	Oboe lessons
Patrick Gatlin	\$1,000.00	Siegel Middle School	School Funds - Baseball	Assistant Baseball Coach
Johanna DeGuzman	\$500.00	Smyrna High School	School Funds - Flag Football	Assistant Coach
Namu Keys	\$600.00	Stewarts Creek High School	School Funds - Girls Flag Football	Assistant Coach

Trevor Eidson	\$1,000.00	Whitworth Buchanan Middle	School Funds - Baseball	Assistant Baseball Coach
Temporary NFS	NTE Amt.	School	Funded By	Description
Brian Webster	\$400.00	Blackman Middle School	School Funds - Rutherford County All Star Band	Event Clinician
Evan Burton	\$400.00	Blackman Middle School	School Funds - Rutherford County All Star Band	Event Clinician
Kamryn Carcich	\$400.00	Whitworth Buchanan Middle School	School Funds - Softball	Temp Softball Coach
Classified	NTE Amt.	School	Funded By	Description
Emily Sutherland	Classified Overtime Pay	Christiana Middle School	Outside Use of Facilities	Facility Manager
Andrea Jefferson	Classified Overtime Pay	Christiana Middle School	Outside Use of Facilities	Facility Manager
Shannon Crutcher	\$500.00	Smyrna High School	School Funds - Flag Football	Assistant Coach

G. Weapons Detection Stipend:

\$500 Second Semester, Carmen Trujillo – Stewarts Creek High

Recommended Motion – to approve the consent agenda as presented.

6. PUBLIC COMMENTS*

**Public comment requests to address the Board must be provided in writing to the Director of Schools' office no later than noon (12:00 p.m.) on the day of the meeting by completing the Public Comment Form. Speakers will have three (3) minutes to speak.*

7. THE RCS DIFFERENCE

Work Session: National Winners — Career and Technical Service Organizations

Career and Technical Education Coordinator Dr. Tyra Pilgrim and her team will present the national student winners from our schools from the various Career and Technical Service Organizations.

Work Session: Tennessee Lapel Pin presentation

LaVergne High Senior Julianna Osorio has been awarded first place in the Tennessee SkillsUSA Pin Design competition, and she will present lapel pins to members of the School Board.

Work Session: Strong Outstanding Staff Awards

Chief Communications Officer James Evans will present the April/May RCS Strong Outstanding Staff awards, presented by Sonic Drive-Ins of Rutherford County.

8. BOARD ITEMS (TAB 2)

Blackman Road Property.

Jeffrey Dismukes, the owner of 86.08 acres on Blackman Road, had given the Board the opportunity to purchase his property. This is near the Poplar Hill school sites. Several Board Members toured the property, but the Board has not taken action to approve putting the property under contract. This matter is being presented to the Board for any action the Board desires to take with regard to the property. The contract has an inspection period during which time the Board can undertake testing and further consideration of the property, and the contract is contingent upon funding approval by the County Commission. The contract presented by the seller is attached online to your Board materials.

9. INSTRUCTION (TAB 3)

Holloway High School Renaming Request: Principal Dr. Jessica Supakhan is requesting to rename the school to reflect a more defined program focus and to strengthen public understanding of the opportunities available to students at Holloway.

Dr. Supakhan, a proud Holloway graduate from the Class of 2000, has conducted extensive research on successful small choice schools and found that a clear academic and programmatic focus is a common factor in both increased enrollment and improved student outcomes. Based on this research, she is proposing a refined focus for Holloway High School centered on fine arts, agriculture, design and business.

Holloway has a long-standing history and holds deep significance within the Rutherford County community. Its legacy as a close-knit school with a strong sense of family continues to be an important foundation. This request seeks to honor that history while building a revitalized identity that reflects the evolving needs and interests of today's students.

To better align the school's identity with this programmatic direction and to positively shape community perception, Dr. Supakhan is proposing an updated school name that retains the Holloway legacy while reflecting its evolving focus. The proposed name change is Holloway Creative Learning Academy, which would allow flexibility as programs evolve over time.

This request is presented for board consideration to support enrollment growth, student engagement, and long-term program development.

Recommended Motion – to approve the renaming request for Holloway as presented.

10. LEGAL (TAB 4)

I. Wilson Elementary Technology Request: Principal Angela Barnes is requesting to enter a partnership with Wilson Bank and Trust to purchase (5) ViewSonic Boards and carts for classrooms. Wilson Bank and Trust will donate \$15,000.00 in exchange for a 5-year marketing agreement.

Recommended Motion – to approve the Wilson Elementary and Wilson Bank agreement as presented.

II. Transfer Student Under Discipline (1)

The Board has been requested to admit a transfer student from another school system under discipline. The student has criminal charges. According to Policy 6.318, the Board may deny admissions of any student (except those in state custody) when a student transfers from another school system while under suspension or expulsion.

Director of Schools' Recommendation: Deny admission.

Recommended Motion - to admit or deny admission of this Transfer Student Under Discipline as presented.

III. Policy Adoption - First and Final Reading

The below policy changes are recommended on the first and final reading as notice must be given to bus contractors in writing at least thirty (30) days prior to implementation of any revised policies that explicitly pertain to buses.

Policy Changes

a. Policy 3.400 - Student Transportation Management

Adds language for payment of insurance premiums and rules for leasing or rental of buses by contractors.

Recommended Approval of Two Motions:

- 1. Recommended Approval - motion to suspend Board Policy 1.600 to specifically waive the two-readings requirement for the above policies as presented; and**
- 2. Recommended Approval - motion to adopt on the first and final reading the above policies as presented.**

11. ENGINEERING AND CONSTRUCTION (TAB 5)

I. Blackman Elementary and Wilson Bank Gym Floor Agreement: Principal Lorie Gober is requesting to enter into an agreement with Wilson Bank for gym improvements not to exceed

\$10,000.00 the current request is to sand and install a new floor with logo at a cost of \$7,200.00. This request is at no cost to the Board. Engineering and Construction has reviewed the request and has no objections.

Recommended Motion - to approve the Blackman Elementary and Wilson Bank agreement request as presented.

II. Blackman Middle Football Storage Building Request. Dr. Jessica Jackson is requesting to purchase a 10' x 16' storage building to be utilized by the football team. The cost of the building is \$3,905.17 and will be funded through football funds at no cost to the Board. Engineering and Construction has reviewed the request and has no objections.

Recommended Motion - to approve the Blackman Middle football storage building request as presented.

III. Siegel High Baseball Field Naming Request: Principal Stephen Wayne is requesting to name the baseball field for the current baseball coach Craig Reavis. Coach Reavis has been the coach since the school opened in 2003 and has 634 wins and numerous district and state championships. Engineering and Construction has reviewed the request and has no objections.

Recommended Motion - to approve of naming the Siegel High baseball field for coach Craig Reavis as presented.

IV. Oakland High Greenhouse Installation Request: Dr. John Marshall is requesting to reconstruct the greenhouse removed from Lavergne High on the campus of Oakland High. This greenhouse was disassembled and relocated to Oakland with coordination of both schools and the Engineering Department. The cost for reassembly and connections to appropriate utilities is estimated to be \$10,000.00 and will be funded through various school funds at no cost to the Board. Engineering and Construction have reviewed this request and has no objections.

Recommended Motion - to approve the reinstallation of the greenhouse as presented.

12. FINANCIAL MATTERS (TAB 6)

I. Fund 143 Budget Amendment

This FY25-26 Centralized Cafeteria Fund amendment increases 99100-504 Indirect Costs and decreases 34570- Restricted Fund Balance in the amount of \$2,000,000 to budget for indirect costs that are accumulated in Fund 141 being reimbursed by Fund 143. Indirect costs are incurred for the benefit of multiple programs, functions, or other cost objectives and cannot be readily identified as having been incurred specially for the school food service program. Indirect cost rates are calculated annually by TDOE and Child Nutrition Programs use the unrestricted indirect cost rate. The FY25-26 unrestricted indirect cost rate for RCS is 11.19%.

Recommended Motion –to approve the FY 25-26 Fund 143 Centralized Cafeteria in the amount of \$2,000,000 in fund balance and expenditures as presented.

II. Fund 141 GPS Amendment

This amendment is to increase Fund 141 budgeted revenues and expenditures in the amount of \$5,556,938 to recognize the awarded Summer Camp Grant for FY25-26. On January 22, 2021, the Tennessee General Assembly enacted the Tennessee Learning Loss Remediation and Student Acceleration Act to address the learning loss of students due to COVID-19 related school closures. Through this law, all Tennessee school districts were required to offer learning loss remediation summer programs for students in rising grades K - 8, starting in summer 2021. Provisions of this law that were set to expire in summer 2023 included Summer Learning Camps for rising grades 1 - 3 and After School Summer Learning Mini Camps (STREAM camps). However, in the 2023 Legislative Session, the Tennessee General Assembly amended the Act to continue summer programming (Summer Learning Camps, After School Summer Learning Mini Camps (STREAM”), Learning Loss Bridge Camps, and Summer Camp Transportation) for rising grades K-9 annually. The funds will be used to fund summer work for principals, teachers, education assistants & secretaries. There is no local match required for this grant.

Recommended motion – to amend budgeted revenues & expenditures in Fund 141 General Purpose in the amount of \$5,556,938 as presented.

III. Approval of the Budget

Recommended Motion – to approve Fund 141 as presented in the attached budget document.

Recommended Motion – to approve Fund 143 as presented in the attached budget document.

13. DIRECTOR’S UPDATE

14. GENERAL DISCUSSION

15. ADJOURNMENT



2240 Southpark Drive
Murfreesboro, TN 37128

MINUTES OF APRIL 23, 2026

Board Members Present

Claire Maxwell, Board Chair
Frances Rosales, Board Vice-Chair
Katie Darby
Tammy Sharp
Caleb Tidwell
Butch Vaughn
Stan Vaught

Also in Attendance

Dr. James Sullivan, Director of Schools

1. CALL TO ORDER -Mrs. Maxwell gaveled in at 5:30 pm.

2. PLEDGE OF ALLEGIANCE & MOMENT OF SILENCE/PRAYER

We will be opening the meeting with a brief moment of silence or prayer and the pledge of allegiance to the United States flag. No one is required to participate or be present for any of these and being in this portion of the meeting is completely voluntary.

Work Session: Stan Vaught

Board Meeting: Stan Vaught

3. APPROVAL OF AGENDA

Motion made by Butch Vaughn and seconded by Frances Rosales to approve the agenda as presented.

Vote: All yes

Motion passes.

4. APPROVAL OF CONSENT AGENDA (TAB 1)

A. Minutes:

Board Meeting Minutes, April 9, 2026

B. Nepotism: James Martin – SPED EA – Rocky Fork Elementary
Michael Bardwell – CTE Teacher - Rockvale High

C. Bids:

- Bid #3854 - Operable Wall Partitions (BHS and SHS)
- Bid #3855 - Floor Machines
- Bid #3856 - Fire Alarm System Upgrades
- Bid #3857 - HVAC Renovation - CTE Bldg. behind CMS
- Bid #3858 - Administration/Teacher Furniture
- Bid #3859 – Calculators

D. Use of Facilities:

FACILITIES USE

4/23/2026

Fees

Blackman Middle	The Center Stage Ensemble, musical theatre production, auditorium, 4/24/26 – 5/3/26, \$1710
Eagleville School	Murfreesboro Obedience Training Club, AKC scent work classes, campus, 4/24/26 – 10/28/26, \$50 a day
Lascassas Elementary	Triple Crown Sports, baseball tournament, sports field, 6/26/26 – 6/29/26, \$290 per day
Oakland High	Tennessee Select Sports, football training, stadium/track, 4/24/26 – 6/28/26, \$115 per hour
Rock Springs Elementary	Pinnacle Point Subdivision HOA, meeting, cafeteria, 4/27/26, \$36
Rockvale High	Legends of Tennessee, football camp, sports field, 4/24/26 – 4/25/26, \$580
Rocky Fork Middle	U.S. Elite Baseball, baseball practice, sports field, 4/24/26 – 10/1/26, \$18 per hour

No Fees

Central Magnet	Wilson Bank and Trust, antique car show, campus, 6/14/26, no fees, *In-Kind Agreement
Oakland High	Inner Light Family Theatre, summer camp, auditorium, 6/2/26 – 6/26/26, no fees, *In-Kind Agreement
Riverdale High	Scouting America, swim test, pool, 5/9/26, no fees
Smyrna Middle	Consider This & Middle Tennessee Children’s Theatre, auditorium, 4/24/26 – 5/28/26, no fees, *In-Kind Agreement

Note: Facility use prior to 4/23/26 has been granted pending Board action. A certificate of insurance with \$2,000,000.00 limits (\$1,000,000.00 if approved) is required by each user. Each group must forward any renewals of insurance to the Board on time; otherwise, approval is terminated at the end of the policy period. **All approvals are for no more than a 1-year period.**

E. Non-Faculty Coaches:

According to the Tennessee Secondary School Athletic Association (TSSAA) guidelines, Board of Education approval is required to allow non-faculty volunteer coaches to participate in the school athletic programs.

The following non-faculty volunteer coaches are for the 2026-2027 school year:

NAME	SCHOOL	ACTIVITY
Clayton, Molly	Eagleville High School	Band
Mudra, Emily	Riverdale High School	Band
Creasey, Amari	Poplar Hill Middle	Volleyball
Evans, Al	Poplar Hill Middle	Cross Country/Track
McKee, Tim	Stewarts Creek High	Football
Owens, Jr, Rodney	Stewarts Creek High	Football

F. Salary Supplements and Contract Payments:

Name-Certified	NTE Amt.	School	Funded By	Description
David Watson	\$3,000.00	Oakland High School	OHS Booster Club	Spring Conditioning Assistant Coach
Kevin Creasy	\$15,500.00	Oakland High School	OHS Booster Club	Spring Conditioning Coach
Mary Diane Howard	\$1,000.00	Oakland High School	School Funds - Boys & Girls Basketball	Clock Operator
Justin Stanford	\$1,000.00	Oakland High School	School Funds - Basketball	Stat Board Operator & Bus Driving for Various Sports
Kevin Creasy	\$27,000.00	Oakland High School	School Funds - Football	Indoor Coordinator
Caitlyn Eaton	\$750.00	Oakland Middle School	School Funds - Track	Assistant Coach
Angela Allison	\$750.00	Oakland Middle School	School Funds - Track & Field	Assistant Coach
Amanda Jones	\$100.00	Riverdale High School	School Funds - Boys & Girls Basketball	Weapons Detection
Kristopher Roets	\$2,800.00	Riverdale High School	RHS Baseball Boosters	Asst. Coach & Camp
Trenton Carrier	\$2,800.00	Riverdale High School	RHS Baseball Boosters	Asst. Coach & Camp
James Daniel Kendrick	\$2,800.00	Riverdale High School	RHS Baseball Boosters	Asst. Coach & Camp
Barry Messer	\$4,000.00	Riverdale High School	RHS Baseball Boosters	Field Maintenance & Camp
Douglas Argo	\$1,500.00	Rockvale High School	School Funds - Track	Mowing Field Maintenance
William Hawkins Jr	\$1,500.00	Stewarts Creek High School	School Funds - Basketball	Concessions Stand Management

William Hawkins Jr	\$2,500.00	Stewarts Creek High School	School Funds - Baseball	Concessions Stand Management
Deven Ferrer	\$1,400.00	Thurman Francis Arts Academy	School Funds - Drama	Director - Drama Club Production of "Into the Woods Jr."
Deven Ferrer	\$750.00	Thurman Francis Arts Academy	School Funds - Drama	Co-Director - Drama Summer Camp 7.6.26 through 7.10.26
Deven Ferrer	\$600.00	Thurman Francis Arts Academy	School Funds - Drama	Director - Elementary Production "Rams on Broadway"
Name-Non Faculty	NTE Amt.	School	Funded By	Description
Brandon Michael Trey Thomas	\$1,000.00	Blackman High School	School Funds - Boys Basketball	Assistant Coach
William Luke Van Winkle	\$2,000.00	Blackman High School	School Funds - Baseball	Baseball Coach
Richie Dustin Clark	\$500.00	Blackman High School	School Funds - Track and Field	Hurdles Coach
Riley Russell	\$25 per half hour	Eagleville School	School Funds - Band	Private lessons for woodwind students
Gabriela Harrelson	\$300.00	Oakland Middle School	School Funds - Swim Team	Assistant Coach
Connor Wright	\$495.00	Rockvale High School	School Funds - Swim Team	Assistant Coach
Ellie Wiemann	\$225.00	Rockvale High School	School Funds - Swim Team	Assistant Coach
William Holliday	\$2,000.00	Rockvale High School	School Funds - Track and Field	Assistant Coach
Temp-Non Faculty	NTE Amt.	School	Funded By	Description
Nichole Kathleen Shannon	\$500.00	Blackman High School	School Funds - Dance	Choreography

Name- Classified	NTE Amt.	School	Funded By	Description
Brandon Utley	\$1,100.00	Oakland High School	Outside Group / Use of Facilities	Cleaning auditorium on Sundays after Church - Christian Life Church
Charles Booker Jr.	\$750.00	Oakland Middle School	School Funds - Track	Assistant Coach

At the work session, Mr. Vaught asked if there was a policy regarding maintenance and who pays for it and the example he gave was turf. The responsibility lies with the school and currently there is no plan in place to maintain the turf fields. Dr. Sullivan said he would discuss this at the next Principal’s meeting.

G. ESL

The ESL department is requesting the use of Title III funds to pay for afterschool curriculum writing. One request, in addition to the names of March 26, 2026, consent agenda, is needed for Kelly Sellars. Pay will be \$50 per hour and paid out of Title III funds.

**H. Weapons Detection Stipends (2nd Semester)
\$500 per semester**

Motion made by Butch Vaughn and seconded by Katie Darby to approve the consent agenda as presented.

Vote: All yes

Motion passes.

5. SPEAKERS

Work Session: The RCS Difference ACT recognition

Work Session: Kyle Carter, Central Magnet School student to present his thesis to the Board.

Work Session: Dr. McCann and Mrs. Walters presenting the Rutherford Prep charter school application committee review.

At the work session, Ms. Sharp asked to suspend the rules and allow the representatives of Rutherford Prep to speak. Mrs. Maxwell asked the board, and they all agreed at 7:09 p.m. to suspend the rules. The board had the opportunity to ask questions regarding any concerns noted by the charter school committee. Mrs. Maxwell gaveled back in at 7:27 p.m.

6. PUBLIC COMMENTS*

**Public comment requests to address the Board must be provided in writing to the Director of Schools' office no later than noon (12:00 p.m.) on the day of the meeting by completing the Public Comment Form. Speakers will have three (3) minutes to speak.*

Brenda Boone-to advocate for the establishment of RCP High School.

Troy Amoss-rezoning impact on his daughter currently attending Siegel Middle and being rezoned to Oakland Middle School after one year of school.

Erica Roberts-employee of Noble Education Initiative. Advocated for a K-12 charter school.

7. THE RCS DIFFERENCE

State Wrestling Winners

Athletics Director Chris Harris presented the state wrestling winners from Rutherford County.

Yamil Rashid, State Champion from Stewarts Creek High School

We also want to recognize Houston Retting, State Champion from Central Magnet on the Eagleville School Wrestling Team. (unable to attend due to a tournament)

March Madness Reading Award

Library Specialist Kaitlyn Benevides presented the winner of the second annual RCS March Madness reading challenge. 250 middle schoolers participated and logged over 93,000 minutes of reading in March. Eagleville School is this year's winner of the March Madness Reading Award. The Eagleville VIP's are Isla Young (6th grade) logged 2,552 minutes of reading, Ryan Kolka (7th grade) logged 4,344 minutes of reading, and Garrison Tallman (8th grade) logged 1,486 minutes of reading in the month of March. Congratulations!

Strong Outstanding Staff Awards

Chief Communications Officer James Evans presented the March RCS Strong Outstanding Staff awards, presented by Sonic Drive-Ins of Rutherford County.

Administrator: Ericka Coronado, Assistant Principal at Smyrna High School

Central Office: Kevin Whittington, Assessments & Accountability Coordinator

Classified: Nurse Penny Tidwell, Thurman Francis Arts Academy

Teacher: Ashton Parnell, Science Teacher at Rock Springs Middle School

Transportation: Sidney Clark, driver for Bus 218

8. HUMAN RESOURCES (TAB 2)

Updated job description for Rutherford County Athletics Director

Motion made by Butch Vaughn and seconded by Caleb Tidwell to approve the updated job description as presented.

Vote: All yes

Motion passes.

9. INSTRUCTION (TAB 3)

I. Rutherford Prep Charter School

-Dr. Sullivan suggested the Board approve the application on the first read. He also mentioned the relationship built with RCP and help needed in the coming fiscal year to support upfront funding of charter schools.

-Mr. Vaughn asked the board to deny the first application and allow Rutherford Prep 30 days to amend their application. He asked the board to support Dr. McCann and the review committee's suggestion.

-Ms. Sharp shared that Rutherford Prep has a solid CEO and resources to draw from.

-Mr. Tidwell shared that their finances went from 5 million in the negative to 8 million in the positive.

-Mr. Vaught asked Mr. Tidwell to explain how they worked to improve their finances so significantly. He wants to understand how they operate and what we might learn from them.

Motion to suspend the rules and allow Rutherford Prep to speak made by Stan Vaught and seconded by Frances Rosales at 6:18 p.m. Rutherford Prep gave a few examples of how they trimmed their budget and made it more efficient. Mrs. Maxwell gaveled back in at 6:37 p.m.

Motion made by Caleb Tidwell and seconded by Frances Rosales to approve Rutherford Prep charter school application as presented for the 27-28 SY.

Roll Call Vote:

Stan Vaught-yes

Butch Vaughn-no

Katie Darby-yes

Tammy Sharp-yes

Caleb Tidwell-yes

Frances Rosales-yes

Claire Maxwell-yes

Vote: 1 no, 6 yes

Motion passes.

II. Updated Job Description - District Textbook and Materials Supervisor

The District Textbook and Materials Supervisor will be responsible for ordering, inventorying, receiving, and providing textbooks to all schools within the district. They will also provide leadership and support to the office staff, develop a schedule for distribution of the system mail and monitor the effectiveness of the delivery services.

Motion made by Stan Vaught and seconded by Caleb Tidwell to approve this updated job description as presented.

Vote: All yes

Motion passes.

III. Social Media and Internet Safety Curriculum

Curriculum and Instruction is seeking approval to pilot the Wired Human curriculum to meet the Teen Social Media and Internet Safety Guidance law (TCA 49-6-4601-4605) in grades 6-8. The curriculum is a value-based curriculum focused on building healthy and safe screens. The modules have been specifically written to be age appropriate for grades 6-8 and contain 9 modules that, if approved, will be delivered by teachers and/or counselors, depending on the topic. The teacher guides, student journals, and parent packets will be provided at no cost to the district.

Motion made by Butch Vaughn and seconded by Tammy Sharp to approve the use of Wired Human curriculum in grades 6-8.

Vote: All yes

Motion passes.

10. LEGAL (TAB 4)

I. Transfer Student Under Discipline (1)

The Board has been requested to admit a transfer student from another school system under discipline. The student was expelled for threat of mass violence. According to Policy 6.318, the Board may deny admissions of any student (except those in state custody) when a student transfers from another school system while under suspension or expulsion.

Director of Schools' Recommendation: Deny admission.

Motion made by Katie Darby and seconded by Stan Vaught to deny admission of this Transfer Student Under Discipline as presented.

Vote: All yes

Motion passes.

II. Transfer Student Under Discipline (2)

The Board has been requested to admit a transfer student from another school system under discipline. The student was expelled for possession of a THC vape. According to Policy 6.318, the Board may deny admissions of any student (except those in state custody) when a student transfers from another school system while under suspension or expulsion.

Director of Schools' Recommendation: Admit; place in on-line program.

Motion made by Stan Vaught and seconded by Tammy Sharp to allow on-line admission of this Transfer Student Under Discipline as presented.

Vote: All yes

Motion passes.

11. ENGINEERING AND CONSTRUCTION

McFadden Property Demolition: The Engineering and Construction Department request approval to issue an RFP for the demolition of all structures on the 5 properties being purchased adjacent to McFadden School. This request will allow unnecessary liability from these structures to be mitigated until the property is repurposed.

Motion made by Butch Vaughn and seconded by Frances Rosales to approve the McFadden property RFP as presented.

Vote: All yes

Motion passes.

12. FINANCIAL UPDATE

Work Session: Working Fund 141 budget discussion

-Dr. Sullivan mentioned the Risk Management Department with the County will recommend an RFP for insurance in early May. He is unsure if bus contractors will be included in this recommendation.

13. DIRECTOR'S UPDATE

Nothing new to report.

14. GENERAL DISCUSSION

-Mrs. Maxwell requested a stipend for those who lost their retirement medical insurance when they transferred from county to state insurance due to a job with RCS.

-Mr. Vaughn made a motion and seconded by Caleb Tidwell to post the Ten Commandments in all Rutherford County Schools. Mrs. Rosales mentioned that it is about to be made into law, but the Board chose to vote in the event that it doesn't pass.

Vote: All yes

Motion passes.

-Ms. Sharp reminded everyone that JazzFest is May 1-2 and two cars have been donated to be given away.

15. ADJOURNMENT -Mr. Maxell gavelled out at 6:46 p.m.



Rutherford County Schools

2240 Southpark Drive
Murfreesboro, TN 37128

MINUTES OF MAY 7, 2026

Board Members Present

Claire Maxwell, Board Chair
Frances Rosales, Board Vice-Chair
Katie Darby
Tammy Sharp
Caleb Tidwell
Butch Vaughn
Stan Vaught

Also in Attendance

Dr. James Sullivan, Director of Schools

1. CALL TO ORDER -Mrs. Maxwell gaveled in at 5:30 pm.

2. PLEDGE OF ALLEGIANCE & MOMENT OF SILENCE/PRAYER

We will be opening the meeting with a brief moment of silence or prayer and the pledge of allegiance to the United States flag. No one is required to participate or be present for any of these and being in this portion of the meeting is completely voluntary.

Pledge & Prayer: led by Claire Maxwell

3. BUDGET WORKSHOP

Dr. Sullivan and Mr. Runion stated that we are a week away from having final revenue numbers. No updated County revenue currently. County government is giving a presentation on their budget tonight not including the school district. Currently we do not have a tax rate yet to factor into the budget. The state department looks at weighted factor, which includes student, needs, and who did the district serve in comparison to city schools.

Currently, we have budgeted a 1.7% COLA increase and are still trying to get to 2%

The Board Work Session will be Monday, May 11 at 5:30 p.m.

The Board Meeting on May 14 will begin at 3:30 due to graduation schedules.

Dr. Sullivan explained as he reviewed Fund 141, we typically bring in more than we go into the deficit. Budgeted deficit is currently over 13 million as of this workshop but it will decrease as we know County revenue.

Cafeteria funds are not affected by the tax rate. We always have to prepare a spend down plan.

Every year we are asked why we do not pay for all lunches for all students. There would be no Federal reimbursement, so this is not a viable option.

Our Payroll is fully moving to the County, and they will be paid by the County.

Mr. Vaught asked if we could consider a transfer between funds (from 143 to 189) for future high school cafeterias to keep it from being added to the bond and hopefully save the district money.

A review of hard to fill positions was discussed and they plan to further discuss stipends at the Board Work Session.

25% of TISA funding went into state retirement this year.

There is a \$4,000 stipend budgeted for bus contractor insurance. If we increase this stipend, bus contractors will have a larger raise than our teachers or take funds away from our contribution to employee medical insurance.

Mr. Tidwell asked to look at how we can increase the stipend amount for bus contractors. He suggested we ask the County to take it from Fund Balance. Dr. Sullivan explained that because this is a recurring expense, it would not be pulled from Fund Balance.

Mr. Vaughn said the insurance increase is the cost of running a business.

Mr. Vaught said that based on the bus contractors built-in yearly pay increase in their contract, that is roughly an additional \$2,000. He discussed including additional money for the fuel surcharge. Mr. Lee says we pay this surcharge currently using money from unfilled contracts.

This coming year there are no extra buses or drivers in the budget.

We are trying to get to a 2% COLA, this increase alone is 1.3 Million

Mr. Runion proposed a stipend for Classified Staff who hold a degree. He suggested for a Bachelors \$1500, Masters \$3500, Doctorate \$5500 to be paid yearly.

4. ADJOURNMENT gaveled out at 6:52 p.m.

Approval of Agenda Minutes

Claire Maxwell, RCS BOE Chairman

Date

Dr. James Sullivan, RCS Director of Schools

Date

Rutherford County School Board Meetings and exact conversations are recorded and may be found at the following link: <https://www.youtube.com/playlist?list=PL7CB325821E536E8D>. Board Meeting minutes are provided as a supplement to the recording.

Bid #3860 - Cabinets and Countertops

Item No	Description	BJB Construction Company	Skilled Services	The Craftsman Depot	Valor Contrators
1	Base Cabinets and Counter Tops 24" x 36": Standard Laminate	\$ 574.00	\$ 330.00	\$ 259.00	\$ 903.00
2	Sink Base Cabinets and Counter Tops 24" x 36": Standard laminate	\$ 574.00	\$ 320.00	\$ 251.00	\$ 838.50
3	Tall Base Cabinets 24" x 36" x 84" Height: Standard laminate	\$ 619.00	\$ 725.00	\$ 427.00	\$ 2,322.00
4	Wall Cabinets 13" x 30": Standard laminate	\$ 499.00	\$ 170.00	\$ 137.00	\$ 645.00
5	42" Tall Base Cabinets with bar back: Standard laminate	\$ 599.00	\$ 480.00	\$ 275.00	\$ 2,451.00

Bid was posted online at BidNet (Sovara)

Recommend: Motion to award to The Craftsman Depot for overall lowest and best bid as highlighted above.

To be funded through CP,GP, BP, and Individual Schools.

Bid #3861 - PE Equipment (Poplar Hill Middle)

Item	Description	BSN Sports/US Games	Game One	Laux Sporting Goods	Quill	S & S Worldwide	ST1 Sports	School Health	School Specialty
1	Shuttlecocks (C-100)	\$ 1.40	\$ 3.00	\$ 6.60				\$ 9.45	\$ 1.19
2	Roll of Black All purpose tape				\$ 4.34			\$ 3.99	\$ 3.09
3	Badminton Racquets	\$ 10.61	\$ 8.28	\$ 4.36		\$ 2.15		\$ 5.99	\$ 6.84
4	Racquet Cart	\$ 189.98	\$ 352.74	\$ 336.86				\$ 211.54	\$ 255.00
5	Full Sized Badminton Nets - BSN	\$ 198.53	*\$28.50	\$ 123.37		*\$15.19		\$ 126.38	\$ 75.52
6	Indoor Softball/Baseball Base set (4 bases)	\$ 8.63	\$ 9.51			\$ 30.34	\$ 22.50	\$ 8.14	\$ 14.70
7	Basketballs Men's Synthetic	\$ 11.74	\$ 25.24	\$ 21.42		\$ 23.95	\$ 38.99	\$ 21.00	\$ 7.27
8	Basketballs Women's Synthetic	\$ 11.74	\$ 25.24	\$ 21.42		\$ 23.95	\$ 38.99	\$ 19.88	\$ 7.27
9	Air Pump Needles	\$ 0.19	\$ 0.32			\$ 30.67	\$ 0.80		\$ 0.13
10	Electric Air Pump - BSN	\$ 79.68	\$ 129.84	\$ 71.72	\$ 121.67	\$ 76.06	\$ 155.00	\$ 79.16	\$ 105.95
11	Colored Mesh Bags - 24" x 36"	\$ 2.47	\$ 3.53	\$ 3.48		\$ 3.53		\$ 2.37	\$ 5.90
12	Ball Locker - BSN	\$ 313.98	\$ 419.00	\$ 688.35		*\$150.97	\$ 355.00	\$ 415.00	\$ 274.31
13	Recess Cart - BSN	\$ 344.47	\$ 360.50	\$ 327.75		\$ 192.17		\$ 521.99	\$ 152.28
14	Indoor/Outdoor Tabletop Scoreboard - BSN	\$ 447.98	\$ 768.15	\$ 614.79				\$ 519.98	\$ 603.21
15	12 inch assorted color game cones (6 in set)	\$ 39.42	\$ 64.95	\$ 51.79		\$ 10.70			
16	Low profile cones (12 in set)	\$ 3.72	\$ 8.88		\$ 23.30	\$ 5.44		\$ 53.67	
17	Frisbee	\$ 2.70	\$ 2.49					\$ 8.36	
18	Soft Bouncee Tuff Volt balls - 6 1/4 inch (6 in set) Green	\$ 91.93	\$ 130.00						\$ 49.91
19	CV4 Soft Shot Stingless volleyballs	\$ 10.36	\$ 16.18			\$ 13.91	\$ 22.99		
20	Game Quality Volleyball Nets and Support Bars	\$ 34.20	\$ 74.24						
21	6 inch indoor rubber balls	\$ 3.68	\$ 4.90		\$ 6.19	\$ 4.09		\$ 3.97	\$ 4.59
22	Youth Footballs	\$ 5.58	\$ 14.16	\$ 12.48	\$ 14.94	\$ 22.20	\$ 23.99	\$ 5.03	\$ 9.42
23	Flag Football kit (50 tear off flags)	\$ 133.37	*\$71.31						
24	Indoor Felt Soccer Balls	\$ 12.62	\$ 23.95	\$ 17.94				\$ 13.48	\$ 8.15
25	Outdoor soccer balls	\$ 5.68	\$ 12.63	\$ 14.35	\$ 9.71	\$ 12.54	\$ 27.99	\$ 9.94	\$ 7.53
26	72 x 48 soccer pop up nets	\$ 76.72	\$ 64.63	\$ 22.43				\$ 40.37	\$ 54.65
27	Inflatable large beach balls	\$ 19.17	\$ 3.04			\$ 4.41		\$ 9.22	\$ 3.62
28	Gopher super squeeze foam balls 6.3" - 6 pack	\$ 30.98	\$ 94.95			\$ 47.99		\$ 45.71	\$ 47.69
29	Gopher super squeeze foam balls 7" - 6 pack	\$ 80.49	\$ 119.00			\$ 71.33		\$ 51.33	

Bid #3861 - PE Equipment (Poplar Hill Middle)

Item	Description	BSN Sports/US Games	Game One	Laux Sporting Goods	Quill	S & S Worldwide	ST1 Sports	School Health	School Specialty
30	Gopher super squeeze foam balls 8.25" - 6 pack	\$ 127.14	\$ 169.00			\$ 92.61		\$ 61.97	\$ 85.44
31	Indoor hockey rubber balls	\$ 24.60	\$ 2.18					\$ 1.60	
32	Indoor Hockey sticks	\$ 289.52	\$ 5.45					\$ 22.36	\$ 16.58
33	Fixed Rung Agility Ladder	\$ 15.10	\$ 30.91	\$ 21.36		\$ 83.57	\$ 82.99	\$ 14.92	\$ 23.04
34	Plyometric Box Set	\$ 561.43	\$ 492.25	\$ 396.38		\$ 610.64		\$ 665.55	
35	Vertical Jump Challenger	\$ 474.65	*\$39.95	\$ 378.77				\$ 452.39	\$ 375.00
36	Digital Dynamometer	\$ 121.44	*\$36.00						\$ 205.26
37	Body Compisiton Scale	\$ 43.20	\$ 1,117.56					\$ 37.76	\$ 33.20
38	Rubber kick balls	\$ 7.77	\$ 8.99			\$ 6.20		\$ 9.61	\$ 4.61
39	Jump Rope Cart	\$ 210.00	\$ 169.00	\$ 154.33				\$ 111.81	\$ 157.50
40	Jump Ropes 9'	\$ 1.76	\$ 3.05		\$ 5.93	\$ 3.34		\$ 2.87	\$ 1.58
41	Jump Ropes 12'	\$ 2.85	\$ 3.17						
42	Jump Ropes 7'	\$ 1.56	\$ 2.55			\$ 2.60		\$ 2.36	\$ 1.25
43	Deluxe Hula Hoops	\$ 55.80	\$ 2.93			\$ 46.67			\$ 6.74
44	Measuring Wheel	\$ 117.75	\$ 120.52	\$ 76.42			\$ 140.00	\$ 68.34	\$ 158.11
45	Closed Measuring Tape - 250'	\$ 22.88	\$ 21.86	\$ 19.88				\$ 24.23	\$ 23.75
46	Omnikan Balls and Bladders		\$ 199.00						
47	Omnikan Inflator	\$ 312.00	\$ 109.00					\$ 123.18	
48	Polly Spots assorted colors	\$ 1.16	\$ 1.83			\$ 7.60		\$ 5.01	\$ 2.21
49	Adult Scrimmage Vest Assorted Colors	\$ 1.36	\$ 3.10	\$ 2.08		\$ 5.17		\$ 2.44	
50	100 Foot Tug-o-War Rope	\$ 201.65	\$ 192.00	\$ 85.40		\$ 69.62		\$ 198.35	\$ 86.36
51	Stationary Chin Bar - 82"	\$ 161.33	\$ 84.00						
52	Stop Watches	\$ 6.30	\$ 6.52	\$ 7.47	\$ 10.32	\$ 7.59	\$ 15.99	\$ 8.88	\$ 3.60
53	First Aid Kit - Cramer	\$ 122.99	\$ 35.00	\$ 87.44	\$ 22.17			\$ 11.54	\$ 104.64
54	Cordless Microphones (no head-set)		\$ 199.00						
55	Fox 40 Whistles	\$ 3.80	\$ 3.50	\$ 3.64	\$ 10.06	\$ 5.37		\$ 5.30	\$ 3.56
56	Lanyards	\$ 0.37	\$ 2.50			\$ 4.74		\$ 0.50	\$ 0.34
57	Safety Plastic Bats	\$ 5.14	\$ 2.99			\$ 5.04		\$ 6.66	
58	Colored PGB Safety Balls (Baseballs)	\$ 0.90	\$ 18.95						\$ 0.66

Bid #3861 - PE Equipment (Poplar Hill Middle)

Item	Description	BSN Sports/US Games	Game One	Laux Sporting Goods	Quill	S & S Worldwide	ST1 Sports	School Health	School Specialty
59	Colored PGB Safety Balls (Softballs)	\$ 1.20	\$ 30.00						\$ 1.08
60	Large plastic storage cubbies with shelves ~ 72 x 72		\$ 719.00						
61	Jr. Handballs		\$ 18.95					\$ 4.76	
62	Scoreboard platform/desk for basketball/volleyball games		\$ 51.96						
63	30 x 24 Pop up net	\$ 41.48	\$ 21.50					\$ 56.34	\$ 23.92
64	Full Size Pool Noodle								\$ 12.36

Bid was posted online at BidNet (Sovara)

*Bidder did not meet bid specs

Recommend: Motion to award to overall lowest and best bid as highlighted in the above spreadsheet

To be funded through GP, BP, and Individual Schools.

Bid #3862
Kitchen Smallwares
(Poplar Hill Middle)

Item #	Model and/or Part #	Description	Mobile Fixture and Equipment	Pueblo Hotel Supply
1	2535-B34	Anti Fatigue Mat - grease resistant, 36" x 48", Comfort Flow or pre approved equal	\$ 30.57	\$ 147.85
2	FG63100WH	Bathroom brush and caddie, Rubbermaid 10F1 or preapproved equal	\$ 3.30	\$ 5.01
3	1085003	Beverage Dispenser, Trimline Rectanglar - 3 gal premium (PC) single base, Black base and Lid, labels, Carlisle #10850	\$ 55.89	\$ 94.95
4	574963	Bowl, Mixing - 13qt, 18/8 stainless; 17 1/2" diameter, 6 1/2" Polar Ware T1243 or preapproved equal	\$ 10.78	\$ 11.91
5	574953	Bowl, Mixing - 3 qt, 18/8 stainless; 9 3/8" diameter, 4" Polar Ware T1233 or pre approved equal	\$ 3.22	\$ 3.56
6	574955	Bowl, Mixing - 5qt, 18/8 stainless; 11 3/4" diameter, 4 1/2" dept Ploar Ware T1235Vollrath or preapproved equal	\$ 4.80	\$ 5.30
7	574958	Bowl, Mixing - 8qt, 18/8 stainless; 13 1/4" diameter, 5 3/8" Polar Ware T1238 or preapproved equal	\$ 6.08	\$ 6.75
8	4015000	Brush, Kettle Valve - White DuPont nylon bristles, steel wire	\$ 6.64	\$ 16.69
9	4054200	Brush , medium stiff nylon bristles-Carlisle model 40542 - 8" white	\$ 12.52	\$ 13.54
10	4039102	Brush, Pastry - Nylon, all white, plastic handle with 2" wide brush,Thermohauser or preapproved equal	\$ 9.14	\$ 10.85
11	4054200	Brush, Pot and Pan - nylon bristles, 8" plastic handle,Sparta or preapproved equal	\$ 12.52	\$ 13.54
12	4042302	Brush, Scrub - 38X "Hi-Lo" floor scrub, 2 position bristle trim,Sparta or preapproved equal	\$ 9.52	\$ 16.21
13	4536700	Brush, Scrub Handle - handle to fit item #18	\$ 14.11	\$ 7.40
14	4000302	Brush, Sparta Atlas Muliti-Purpose - 30 in handle oval head, polyester bristle, Carlisle Model 028-40003	\$ 16.16	\$ 23.61
15	4016402	Brush, Vegetable - Nylon bristles, 9 1/2",Sparta or preapproved equal	\$ 9.76	\$ 13.78
16	1527-06	Bus Box - 22" x 17" x 7", Traex or preapproved equal	\$ 9.70	\$ 15.25
17	1258B	Butcher Steel - knife sharpener, heavy weight 5/8" diameter,Dexter-Russell or preapproved equal 5/8 diameterbutcher steel	\$ 24.89	\$ 35.13
18	CD100110	Camdollie - Polyethylene, heavy duty casters	\$ 76.64	\$ 255.27
19	266/115V	Can Opener, Electric - Edlund266115 or pre-approved equal	\$ 871.62	\$ 905.41
20	1S	Can Opener, Manual - stainless steel only, screw base,Edlund#1 or preapproved equal	\$ 93.81	\$ 195.35
21	1250	Can Rack with Casters - USDA & NSF approved, 25 1/4"l x 35"D x 71" H	\$ 766.00	\$ 982.58
22	444	Cart, Utility - 22 3/8"x39 1/4"x 37 1/4", stainless steel, 3 shelf, 500 lb. Capacity; Lakeside 444 or equal	\$ 675.00	\$ 764.40
23	FG450500BLA	Cart, Utility - 16 1/4"x30"x 34 1/4", stainless steel, 2 shelf, 700 lb. Capacity; Lakeside 710 or equal	\$ 300.00	\$ 427.94

Bid #3862
Kitchen Smallwares
(Poplar Hill Middle)

Item #	Model and/or Part #	Description	Mobile Fixture and Equipment	Pueblo Hotel Supply
24	47969	Colander, Stainless Steel - perforated with 3/16" holes, 8 quart capacity, 14" x 6" Polar Ware T1338 or preapproved equal	\$ 8.46	\$ 36.67
25	47974	Colander, Stainless Steel - perforated with 3/16" holes, 14 quart capacity, 16 1/2" x 7" Polar Ware T1343 or preapproved equal	\$ 11.13	\$ 49.08
26	47965	Colander, Strainer w/Handle - Sturdy aluminum, .073" hole diameter, 5 quart, 12"x5" Polar Ware T1335 or preapproved equal	\$ 6.66	\$ 23.39
27	5412CBP480	Condiment Dispenser -Cambro 5 in organizer bin or preapproved equal	\$ 25.28	\$ 7.59
28	SFC6452/SFC2451	Container Lids - Lid/2,4,6,8 quart for items	\$ 2.88	2.61/3.33
29	8SFSCW135	Container, Storage - Pocket Style, clear, 8 qt,Rubbermaid,Cambro, orpreapproved equal	\$ 12.55	\$ 14.62
30	2SFSCW135	Containers, Storage - Pocket Style, clear, 2 qt,Rubbermaid,Cambro, or preapproved equal	\$ 5.40	\$ 6.48
31	6SFSCW135	Containers, Storage - Pocket Style, clear, 6 qt,Rubbermaid,Cambro or preapproved equal	\$ 10.70	\$ 12.50
32	4SFSCW135	Containers, Storage - Pocket Style, clear,4 qt,Rubbermaid, Cambro or approved equal	\$ 8.30	\$ 9.99
33	CBG1520KC	Cutting Board - color coded with stripe, pre-sorted pack, anti-bacterial and dishwasher safe,15"x20"x1/2", anti slip safety safety grip San Jamar CGB152012or preapproved equal	\$ 188.50	\$ 223.55
34	1812589	Digital Scale Scale, digital portion, top loading counter model, digital display, A/C power (rechargeable), 6 lb x 1/8 oz, graduation, ABS plastic housing, s/s platform, portable with hold feature, with tare feature.Rubbermaid FS6 or preapproved equal	\$ 55.76	\$ 154.94
35	72919	Dipper - Stainless Steel, 1 qt capacity, 12" long hooked handle Polar Ware T1732 or preapproved equal	\$ 8.55	\$ 9.37
36	47141	Disher #10 , 3oz, NSF approved , polypropylene handle color coded handle ,lifetime warranty, Polar Ware T 7410 or preapproved equal	\$ 12.35	\$ 13.03
37	47143	Dishers #16 - 2oz, NSF approved, polypropylene handle color-coded Vollrath or preapproved equal	\$ 12.35	\$ 13.01
38	47146	Dishers #30 - NSF approved, polypropylene handle color coded handle , lifetime warranty, Polar Ware T7430 or preapproved equal	\$ 12.35	\$ 13.01
39	47140	Dishers #8 - 4oz, NSF approved, polypropylene handle color coded handle ,lifetime warranty, Polar Ware T7408 or preapproved equal	\$ 12.35	\$ 13.10
40	BR578168	Dishwasher Rack, Open - open rack, tall, full size, 19 3/4" sq polypropylene, overall ht 6 7/8", inside comp. Size 18"x18", inside ht 5 1/2", NSF Cambro or pre approved equal	\$ 17.98	\$ 50.72

Bid #3862
Kitchen Smallwares
(Poplar Hill Middle)

Item #	Model and/or Part #	Description	Mobile Fixture and Equipment	Pueblo Hotel Supply
41	PR314151	Dishwasher Rack, Plates/Bowl - plate/peg rack, standard height, full size, 19 3/4" sq, polypropylene, overall ht 3 1/4", inside comp size 1 9/16"x18 1/16", inside ht 2 3/4", NSF certified Model 52672 cambro or preapproved equal	\$ 18.69	\$ 29.32
42	OETR314151	Dishwasher Rack, Trays/Pans - open rack, open end with channel, full size, 19 3/4" sq, polypropylene, overall ht 4 7/8", inside comp size 1 9/16"x18 1/16", inside ht 3 1/4", NSF certified, Cmbro or pre approved equal	\$ 23.76	\$ 29.93
43	FG264000BLA	Dolly - structo for 20, 32,44 and 55 gallon containers, made of engineered resins, black, Rubbermaid or pre approved equal	\$ 29.77	\$ 61.37
44	FGK15500BL00	Dust Mop - 36" cotton head, Kut-A-Way or pre approved equal	\$ 10.53	\$ 13.78
45	FGM255000000	Dust Mop - Frame for 36" ,Kut-A-Way or preapproved equal	\$ 5.39	\$ 8.34
46	FGM116000000	Dust Mop - Handle 60" long, Kut A Way or pre approved equal	\$ 10.67	\$ 14.95
47	36143703	Dust Pan - heavy duty, 8 1/8" x 12 1/4" x 12 1/4", Rubbermaid, Carlisle or preapproved equal	\$ 4.33	\$ 9.95
48	36141003-1	Dust Pan, Lobby - heavy duty, 5 3/4" x 12" x 36 5/8", Rubbermaid, Carlisle or preapproved equal	\$ 10.12	\$ 21.18
49	40290	First Aid Kit - ANSI Kit, plastic case with supplies for 10 employees	\$ 39.30	\$ 57.96
50	4007600	Floor Squeegee - metal zinc plated with rubber edge, 24"x2 1/16"x1/4", Carlisle 028-40076 or preapproved equal	\$ 23.10	\$ 37.28
51	362012500	Floor squeegee Handle - tapered, 60", for floor squeegee item #200, Carlisle or preapproved equal	\$ 5.33	\$ 37.28
52	84780	Funnel - Stainless steel, 2 qt., 9" diameter top Polar Ware T1808 or preapproved equal	\$ 7.83	\$ 77.24
53	SG10-L	Glove Kevlar - Cut Resistant Gloves Large, must fit left and right hand, San Jamar WG1100L or preapproved equal	\$ 29.89	\$ 28.47
54	436000.0002	Hot Water Dispenser - 5 gallon hot water machine, must dispense up to 18 gallons of boiling water per hour and reach 72 - 212 degrees F. Bunn model #H5X-18-120 or preapproved equal.	\$ 902.00	\$ 1,048.29
55	46790	Ice Scoop - 9.5" long, stainless steel, Polar Ware T7010 or preapproved equal	\$ 2.46	\$ 6.96
56	SI4550	Ice Scoop - Durable polycarbonate 6oz, San Jamar Saf-T-Scoop, S15500 or preapproved equal	\$ 10.48	\$ 24.45
57	SI2000	Ice Scoop Holder - hinged lid, bracket mount, dishwasher safe, 8 1/2"Wx7"Dx10 1/2"H	\$ 40.23	\$ 43.50
58	RCU64	Ice Wand - Reusable plastic. 4-11/16"Diam.x7"H. Dishwasher safe. San Jamar Rapi Kool RCU 64 or preapproved equal	\$ 35.17	\$ 37.34

Bid #3862
Kitchen Smallwares
(Poplar Hill Middle)

Item #	Model and/or Part #	Description	Mobile Fixture and Equipment	Pueblo Hotel Supply
59	RCU128	Ice Wand - Reusable plastic. Reusable plastic. 4-1/2"Diam.x14-3/4"H. Dishwasher safe. San Jamar Rapi-kool RCU128 or preapproved equal	\$ 48.37	\$ 51.56
60	KR-699	Knife Rack - stainless steel, dishwasher safe, removable slides Edlund KR699 or preapproved equal	\$ 13.64	\$ 90.86
61	S284-8	Knife, Baker's Spatula - stainless steel blade, NSF approved, 10" x 1 5/8",Dexter- Russell 17443 or preapproved equal	\$ 2.97	\$ 15.34
62	P94819	Knife, Boner - 6" stainless steel blade, NSF approved,dexter-Russell 31615	\$ 6.65	\$ 8.72
63	40549	Knife, Bread - plastic handle, 8" or 9" serrated, NSF approved, Forschner 40549 or approved equal	\$ 8.16	\$ 29.80
64	P94801	Knife, Cooks - 8" stainless steel, NSF approved,Dexter-Russell 31600 or preapproved equal	\$ 10.26	\$ 15.69
65	40508	Knife, Paring - 3 1/4" blade, stainless steel,Forschner 40508 or preapproved equal	\$ 7.09	\$ 5.82
66	SG173SC-PCP	Knife, Sandwich Spreader - 3 1/2" blade, stainless steel, scalloped edge, NSF approved,Dexter-Russell 24403	\$ 1.66	\$ 10.31
67	4980410	Ladle - 4 oz., stainless steel, one piece, NSF approved Polar Ware T2204C or preapproved equal	\$ 2.04	\$ 18.35
68	4980610	Ladle - 6 oz., stainless steel, one piece, NSF approved Polar Ware T2206C or preapproved equal	\$ 2.55	\$ 19.14
69	95320	Measuring Cup, Bouncer - steel, 1 qt, Polar Ware T1062 or preapproved equal	\$ 6.21	\$ 70.85
70	95640	Measuring Cup, Bouncer - steel, 2 quart, Polar Ware T1063 or pre approved equal	\$ 9.30	\$ 85.47
71	575670	Measuring Cup, Bouncer - steel, 4 quart,Polar Ware T 1064 or preapproved equal	\$ 16.17	\$ 27.91
72	FG321600CLR	Measuring Cups - clear Carb-x material, stain resistant, standard and metric calibrations, full size handle, quart size Rubbermaid 3216 or preapproved equal	\$ 7.84	\$ 17.04
73	47119	Measuring Cups - stainless steel, 1/4, 1/3, 1/2, 1 Cup nested Polar Ware T1245 or preapproved equal	\$ 3.85	\$ 25.07
74	47118	Measuring Spoons - stainless steel, 1/4 tsp, 1/2 tsp, 1 tsp, 1 TBSP Polar Ware T1244 or preapproved equal	\$ 2.26	\$ 8.18
75	571929	Mechanical Timer, Minute Timer , 2-3/4 in Face, Range 1 min. - 1 hr., 18 Second Ring,Browne Halco 1929 or preapproved equal	\$ 11.00	\$ 13.12
76	90031	Menu Board - white board, uses dry erase markers and erasers, 24" x 36", Chef Master 90031 or preapproved equal	\$ 66.38	\$ 70.94
77	2064914	Mop Bucket - 36 quart with casters,Rubbermaid 757088 or preapproved equal	\$ 62.90	\$ 66.99

Bid #3862
Kitchen Smallwares
(Poplar Hill Middle)

Item #	Model and/or Part #	Description	Mobile Fixture and Equipment	Pueblo Hotel Supply
78	SMFG612788YEL	Mop Wringer - 12-32 oz., yellow, sideward pressure, Rubbermaid 612788Y or pre approved equal	\$ 49.98	\$ 71.33
79	H5005SCL	Napkin Dispenser - counter top, w/stand, high capacity contact owner for napkin sample. San Jamar Venu or preapproved equal. San Jamar Model #560	\$ 61.99	\$ 78.12
80	336-15	Oven mitt 15" ThermotexII, flame retardant, Intedge 33615 or preapproved equal	\$ 3.35	\$ 17.08
81	2154	Paddle - stainless steel, 18 gauge, 60" length, American Metal Craft 2160 or preapproved equal	\$ 25.85	\$ 57.82
82	KP196KCRD	Pails, Cleaning Solution Safety - durable, red pail, proper sanitizing procedures printed on container, 6 qt, San Jamar KP196KC or preapproved equal	\$ 6.34	\$ 7.02
83	45528	Pan Cover - Flat solid, stainless steel, full size, Polar Ware Edge EL11S or pre-approved equal	\$ 14.87	\$ 18.14
84	45538	Pan Cover - Flat solid, stainless steel, half size, Polar Ware Edge EL12S or pre-approved equal	\$ 7.63	\$ 10.39
85	22240	Pan Cover - Flat solid, stainless steel, long size, half pan, Polar Ware Edge EL12LS or pre-approved equal	\$ 12.04	\$ 15.47
86	575529	Pan Cover - Flat, slotted, stainless steel, full size, Polar Ware Edge EL11N or pre-approved equal	\$ 14.87	\$ 18.21
87	575539	Pan Cover - Flat, slotted, stainless steel, half size, Polar Ware Edge EL12N or pre-approved equal	\$ 7.63	\$ 10.40
88	575559	Pan Lids, Steam Table , slotted to fit quarter size pans	\$ 5.27	\$ 6.42
89	58132640	Pan, Bun/Sheet - 18" x 13" x 1", 18 gauge aluminum, NSF approved, Browne -Halco 6182251	\$ 8.16	\$ 9.88
90	58182640	Pan, Bun/Sheet - 18" x 26" x 1", 16 gauge aluminum, NSF approved/Browne-Halco 6182651 or preapproved equal	\$ 10.65	\$ 14.94
91	ABP-1826H	Pan, Cake - 18"x26" x 2 1/2" w/ handles, International ABP1826H or preapproved equal	\$ 64.45	\$ 174.84
92	22002	Pan, Steam Table - 22 gauge stainless steel, full size, 12 3/4" x 20 3/4" x 2 1/2" reinforced corners , Polar Ware Edge Pan Model #IE112 or pre-approved equal	\$ 18.57	\$ 24.53
93	22004	Pan, Steam Table - 22 gauge stainless steel, full size, 12 3/4" x 20 3/4" x 4" reinforced corners , Polar Ware Edge Pan Model #IE114 or pre-approved equal	\$ 24.13	\$ 33.45
94	22006	Pan, Steam Table - 22 gauge stainless steel, full size, 12 3/4" x 20 3/4" x 6" reinforced corners , Polar Ware Edge Pan Model #IE116 or pre-approved equal	\$ 32.29	\$ 38.78
95	22122	Pan, Steam Table - 22 gauge stainless steel, half size, 10 3/8" x 12 3/4" x 2 1/2" reinforced corners , Polar Ware Edge Pan Model #IE122 or pre-approved equal	\$ 11.24	\$ 14.82
96	22124	Pan, Steam Table - 22 gauge stainless steel, half size, 10 3/8" x 12 3/4" x 4" reinforced corners , Polar Ware Edge Pan Model #IE124 or pre-approved equal	\$ 13.94	\$ 18.94

Bid #3862
Kitchen Smallwares
(Poplar Hill Middle)

Item #	Model and/or Part #	Description	Mobile Fixture and Equipment	Pueblo Hotel Supply
97	22242	Pan, Steam Table - 22 gauge stainless steel, long half, 20 3/4" x 6 3/8" x 2 1/2" reinforced corners , Polar Ware Edge Pan Model #IE12L2 or pre-approved equal	\$ 17.39	\$ 21.29
98	22244	Pan, Steam Table - 22 gauge stainless steel, long half, 20 3/4" x 6 3/8" x 4" reinforced corners , Polar Ware Edge Pan Model #IE12L4 or pre-approved equal	\$ 21.49	\$ 24.87
99	22246	Pan, Steam Table - 22 gauge stainless steel, long half, 20 3/4" x 6 3/8" x 6" reinforced corners , Polar Ware Edge Pan Model or pre-approved equal	\$ 33.35	\$ 35.72
100	22146	Pan, Steam Table - 22 gauge stainless steel, quarter, 10 1/4" x 6 3/8" x 6" reinforced corners , Polar Ware Edge Pan Model or pre-approved equal	\$ 15.57	\$ 20.29
101	5781111	Pans, Adapter Bar for Steam Table - to go across a 12" bar, stainless steel 12 5/16"x3/4", Polar Ware 1U or pre approved equal	\$ 1.75	\$ 1.73
102	22112	Pans, Perforated - 22 gauge, stainless steel, full size, 12 3/4" x 20 3/4" x 2 1/2" reinforced corners , Polar Ware Edge Pan Model #IE112P or pre-approved equal	\$ 24.11	\$ 30.22
103	22114	Pans, Perforated - 22 gauge, stainless steel, full size, 12 3/4" x 20 3/4" x 4" reinforced corners , Polar Ware Edge Pan Model #IE114P or pre-approved equal	\$ 29.65	\$ 40.08
104	4039202	Pastry Brush - 3" S foam handle, polypropylene, ferrule, 6.12 nylon, white	\$ 7.99	\$ 13.28
105	18400	Peeler, Vegetable - standard size, stainless steel, Dexter-Russell 18400	\$ 4.30	\$ 10.76
106	P177A-PCP	Pizza Cutter - stainless steel, 4" blade, all metal parts, Dexter Russell 18023	\$ 5.07	\$ 21.60
107	PO-8P	Quick Bucket Opener - dishwasher safe, Copperfield 56025 or Warner144 or preapproved equal	\$ 5.89	\$ 6.56
108	1461	Rack Baker's Heavy Duty - one piece high strength aluminum, pass through design, easy to handle 5" casters w/ two brakes, accepts 18"w x 26" d pans, 21 1/4" w x 69 1/4" H, 40 pan capacity.	\$ 589.65	\$ 709.42
109	5675CL	Rack Cover, Deluxe - 69" high, Marco 675CL or preapproved equal	\$ 26.72	\$ 71.76
110	SUPRO-12-TW	Rack Cover, Deluxe - Polycarbonate covers, acrylic with handles, one end cut out, 62" high, Curtron Supro18TW	\$ 20.00	\$ 61.96
111	FGYG425R	Scales, Portion - 25 lb x 2 oz, stainless steel platform, Rubbermaid YG400R or preapproved equal	\$ 66.81	\$ 71.67
112	DF-2	Scales, Portion - 32 oz x 1/4 oz, stainless steel platform, Edlund DF2 or preapproved equal	\$ 64.86	\$ 231.21
113	1029-32	Scoop, Bar - 32 oz Carb-X, Cal-Mil 102932	\$ 5.28	\$ 27.85
114	FG288200CLR	Scoop, Bar - 6 oz Carb-X, Rubbermaid 2882 or approved equal	\$ 4.67	\$ 7.91

Bid #3862
Kitchen Smallwares
(Poplar Hill Middle)

Item #	Model and/or Part #	Description	Mobile Fixture and Equipment	Pueblo Hotel Supply
115	FG1964000000	Scraper - all plastic fused, 16" long high temp.Rubbermaid 1964	\$ 4.87	\$ 19.74
116	FG1962000000	Scraper - all plastic fused, 9.5" long high temp.Rubbermaid 1962 or preapproved equal	\$ 2.08	\$ 11.54
117	1345	Scraper, Pan - 3" blade, stiff	\$ 2.19	\$ 1.69
118	52023	Scraper, Plastic - molded on blade, seamless, 13.5" long high temp.	\$ 4.71	\$ 15.30
119	498-10NPKE	Shears, Kitchen - forged steel, 10" long	\$ 3.49	\$ 60.88
120	S39-25BK	Sign - "Employees must wash hands before returning to work", wall mountable	\$ 2.17	\$ 2.37
121	S39-11BK	Sign - "No Smoking", wall mountable,Update International S3911BK	\$ 2.17	\$ 3.59
122	S39-25BK	Sign - "Wash hands before leaving bathroom", wall mountable,Update international or preapproved equal	\$ 1.92	\$ 2.37
123	FG627777YEL	Sign, Floor - "Wet Floor"Rubbermaid 627777Y or preapproved equal	\$ 11.33	\$ 21.39
124	FWC56148	Silverware Cylinders - Nylon, 5 7/16"H x 4 7/16"D Cambro FWC56	\$ 0.93	\$ 5.24
125	SLSKR65	Skimmer - 6" dia., 16" long, stainless steel Polar Ware T1706 or preapproved equal	\$ 12.27	\$ 5.18
126	S285-3	Spatula, Hamburger Turner - 4" x 3", Sani-safe	\$ 5.44	\$ 22.87
127	5744311	Spatula, Pie - stainless steel, 5" blade	\$ 2.41	\$ 2.28
128	RSC-16HR	Spatula, Rubber - scraper 16" plastic, 9.5" high temp Update International RSC16HR	\$ 9.18	\$ 5.35
129	58123	Spatulas, Spoon - Shaped Spoonula - 13.5" High temp.	\$ 5.37	\$ 16.48
130	58126	Spatulas, Spoon - Shaped Spoonula - 16.5" High temp	\$ 5.64	\$ 21.04
131	58110	Spatulas, Spoon - Shaped Spoonula - 9.5" High temp.	\$ 3.20	\$ 12.19
132	6432230	Spoodle - 2 oz, one piece, heavy-duty, perforated, color coded handle, cool to touch, up to 230 degrees F. NSF, Vollrath 6432230, or preapproved equal	\$ 1.62	\$ 14.99
133	6433230	Spoodle - 2 oz, one piece, heavy-duty, solid color coded handle, cool to touch, up to 230 degrees F. NSF,Vollrath 6433230, or preapproved equal	\$ 1.62	\$ 14.99
134	6432335	Spoodle - 3 oz, one piece, heavy-duty, perforated, color coded handle, cool to touch, up to 230 degrees F. NSF,Vollrath,6432335, or preapproved equal	\$ 1.73	\$ 15.07
135	6433335	Spoodle - 3 oz, one piece, heavy-duty, solid, color coded handle, cool to touch, up to 230 degrees F. NSF,Vollrath 6433335, or preapproved equal	\$ 1.73	\$ 15.09
136	6432445	Spoodle - 4 oz, one piece, heavy-duty, perforated, color coded handle, cool to touch, up to 230 degrees F. NSF,Vollrath 6432445, or preapproved equal	\$ 2.06	\$ 15.50
137	6433445	Spoodle - 4 oz, one piece, heavy-duty, solid, metal, color coded handle, cool to touch, up to 230 degrees F. NSF, Vollrath 6433445, or preapproved equal	\$ 2.06	\$ 15.48

Bid #3862
Kitchen Smallwares
(Poplar Hill Middle)

Item #	Model and/or Part #	Description	Mobile Fixture and Equipment	Pueblo Hotel Supply
138	3433655	Spoodle - 6 oz, one piece, heavy-duty, perforated solid , color coded handle, cool to touch, up to 230 degrees F. NSF,Vollrath 6433655, or preapproved equal	\$ 2.45	\$ 16.19
139	6432655	Spoodle - 6 oz, one piece, heavy-duty, perforated, color coded handle, cool to touch, up to 230 degrees F. NSF,Vollrath6432655, or preapproved equal	\$ 2.45	\$ 16.15
140	6433865	Spoodle - 8 oz, one piece, heavy-duty, perforated solid , color coded handle, cool to touch, up to 230 degrees F. NSF,Vollrath 6433865, or preapproved equal	\$ 2.77	\$ 16.64
141	6432865	Spoodle - 8 oz, one piece, heavy-duty, perforated, color coded handle, cool to touch, up to 230 degrees F. NSF,Vollrath6432865, or preapproved equal	\$ 2.77	\$ 16.58
142	64408	Spoons, Mixing - 15" slotted, heavy gauge stainless steel ,NSF, Vollrath , 64408 or preapproved equal	\$ 1.47	\$ 15.04
143	64406	Spoons, Mixing - 15" solid, heavy gauge stainless steel ,NSF,Vollrath 64406, or preapproved equal	\$ 1.51	\$ 15.05
144	64132	Spoons, Pierced - 13" with molded plastic handles, stainless steel,NSF, Vollrath 64132,or preapproved equal	\$ 3.08	\$ 15.80
145	46950	Spoons, Slotted - 11 3/4", mirror polished stainless steel, no seams, hollow handles,NSF, Vollrath 46950,or preapproved equal	\$ 1.45	\$ 10.96
146	64134	Spoons, Slotted - 13" with molded plastic handles, stainless steel,NSF, Vollrath 64134, or preapproved equal	\$ 3.08	\$ 15.80
147	46952	Spoons, Solid - 11 5/8", mirror polished stainless steel, no seams, hollow handles ,NSF, Vollrath 46952 or preapproved equal	\$ 1.50	\$ 11.01
148	64130	Spoons, Solid - 13" with molded plastic handles, stainless steel,NSF, Vollrath 64130,or preapproved equal	\$ 2.99	\$ 15.67
149	4007500	Squeegee - 18" long, floor model,Carlisle 40075 or preapproved equal	\$ 18.62	\$ 29.99
150	FG252300BLA	Step Stool - 16" base, 13" high, Rubbermaid 2523 BKor approved equal	\$ 102.32	\$ 146.04
151	18266CW135	Storage Food Boxes - Mark It Fresh, clear, full size, 18"x26"x6" deep,Cambro18266CW or preapproved equal	\$ 22.44	\$ 43.28
152	FG572624WHT	Storage Containers - round food storage containers with lids, 12 qt capacity,Rubbermaid 572624, or preapproved equal	\$ 20.32	\$ 22.92
153	FG572700WHT	Storage Containers - round food storage containers with lids, 18 qt capacityRubbermaid 5727 or preapproved equal	\$ 26.69	\$ 28.67

Bid #3862
Kitchen Smallwares
(Poplar Hill Middle)

Item #	Model and/or Part #	Description	Mobile Fixture and Equipment	Pueblo Hotel Supply
154	FG572800WHT	Storage Containers - round food storage containers with lids, 22 qt capacity,Rubbermaid 5728 or preapproved equal	\$ 29.42	\$ 32.89
155	FG572324CLR	Storage Containers - round food storage containers with lids, 6 qt capacity,Rubbermaid 572324 or pre approved equal	\$ 10.93	\$ 14.20
156	12186CW135	Storage Food Boxes - Mark It Fresh, clear, half size, 18"x12"x6" deepCambro12186CW	\$ 12.01	\$ 26.90
157	1826CCW135	Storage Food Lids - Lids should fit storage boxes in item #184,Cambro or preapproved equal	\$ 11.77	\$ 26.54
158	1218CCW135	Storage Food Lids - Lids should fit storage boxes in item #186,Cambro or preapproved equal	\$ 5.87	\$ 16.60
159	1959	Tea Dispensers - 18-8 stainless steel, heavy duty faucet, 5 gallon,Tablecraft 1959 pr preapproved equal	\$ 157.27	\$ 226.39
160	PDQ400	Thermometer , digital, temperature range -4 - 400 degree Fahrenheit, accuracy +/- 1 degree accuracy, waterproof, field calibratable, max temperature hold, date hold, F/C switchable, thin tapered tip, BioCote. Fluke DT 400	\$ 15.51	\$ 11.57
161	5939N	Thermometer, Meat - stainless steel, hermetically sealed, dishwasher safe, 41/2" stem, non-toxic filling,, show cooking guide for meatTaylor 5939 preapproved equal	\$ 3.29	\$ 8.76
162	3506FS	Thermometer, Oven - Dial type, hangs or stands,Taylor 3506 or preapproved equal	\$ 4.63	\$ 3.36
163	6714	Thermometer, Wall - , 13 1/2" F & C scales Taylor 6700 or preapproved equal	\$ 1.73	\$ 11.67
164	FG80AK	Thermometers, Freezer - rust proof, 4 7/8" x 1 1/4" hand and stand, -40 to +80 degrees F.FlukeFG80AK or preapproved equal	\$ 4.32	\$ 3.77
165	3509FS	Thermometers, Glass Stick - 2 degree graduations, tempered glass, plastic case with clip, 0 to 220 degrees F.Taylor 3509 or preapproved equal	\$ 3.35	\$ 1.88
166	47312	Tongs - Stainless steel, spring loaded, 12" utility tongs, scalloped edges, Vollrath 47312 or preapproved equal	\$ 2.69	\$ 6.70
167	47309	Tongs - Stainless steel, spring loaded, 9 1/2" utility tongs, scalloped edges, Vollrath 47309 or preapproved equal	\$ 2.17	\$ 5.05
168	FG264000BLA	Trash Can Dolly - Rubbermaid 2640-43 or preapproved equal	\$ 45.60	\$ 61.37
169	FG614300BEIG	Trash Can, Step On w/ lid Rubbermaid 614300 Beige or preapproved equal	\$ 110.51	\$ -
170	FG263200GRAY	Trash, Container - 32 gallon brute 2632 or preapproved equal	\$ 19.63	\$ 42.74
171	FG264360GRAY	Trash, Container - 44 gallon brute Rubbermaid 2643 or preapproved equal	\$ 30.23	\$ 65.14

**Bid #3862
Kitchen Smallwares
(Poplar Hill Middle)**

Item #	Model and/or Part #	Description	Mobile Fixture and Equipment	Pueblo Hotel Supply
172	FG263100GRAY	Trash, Container Lids - must fit item #203	\$ 6.48	\$ 12.73
173	FG264560GRAY	Trash, Container Lids - must fit item #204	\$ 11.02	\$ 18.80
174	TDC12110	Tray, Caddy - polyethylene cart, Includes vinyl cover and 6" swivel casters, CambroTDCR12 or pre-approved equal	\$ 1,000.00	\$ 1,136.30
175	10146CW	Tray, Compartment - rectangular, 10"x14 1/2", polycarbonate, 5 food compartments, 1 flatware compartment (List color options)Camware 10146CW or preapproved equal	\$ 6.80	\$ 9.24
176	1826101	Tray, display, 18"x26" assorted colors, Cambro 144-1826 or preapproved equal	\$ 20.73	\$ 28.80
177	FG199300GRAY	Wall Rack - Rubbermaid Handler 34" Rubbermaid 1993G	\$ 74.17	\$ -
178	T43S5050RD	Water Hose, Hot Temp. - 50 foot, must withstand temperature of 200 degrees F or higher., 5/8" inside diameter No Trax724311 or pre approved equal	\$ 75.25	\$ 70.11
179	55550-8	Wedgemaster - 8 section Lincon 808N or preapproved equal	\$ 99.04	\$ 198.77
180	20038	Wire Grates - 16 1/2" x 24 1/2", fits 18 x 26 panPolar ware T2416W or preapproved equal	\$ 19.15	\$ 62.54
181	601647	Wire Grates - full size, chrome plated, heavy duty, welded wire,Polar Ware T2000w or preapproved equal	\$ 10.70	\$ 13.74
182	601642	Wire Grates - half size, chrome plated, heavy duty, welded wire, Polar ware T1312W or preapproved equal	\$ 6.43	\$ 3.90
183	47258	Wire Whip, Piano Whip - NSF approved, 16" stainless steel Vollrath 47066 or preapproved equal	\$ 3.78	\$ 16.29

Bid was posted online at BidNet (Sovara)

Recommend: Motion to award to overall lowest and best bid as highlighted in the above spreadsheet

To be funded through BP and FS

REAL ESTATE PURCHASE AGREEMENT
(4324 Blackman Road, Murfreesboro, TN)

THIS AGREEMENT is made as of the 29th day of Aug, 2025 ("Effective Date"), between Jeffrey S. Dismukes and Ruby Dianne Dismukes (collectively "Seller"), and the Rutherford County Board of Education ("Buyer").

Background

Buyer wishes to purchase property owned by Seller located at 4324 Blackman Road, Murfreesboro, Rutherford County, Tennessee consisting of approximately 86.08 acres, more or less, further identified as Parcel No. 071-011.03-000 in the Office of the Rutherford County Property Assessor, and as generally depicted on Exhibit "A", less an area of approximately 1.5 acres around Seller's personal home on an adjoining parcel to be retained by Seller, together with all trade names, franchises, licenses, permits, development rights and approvals, deposits, credits, petroleum and mineral interests and royalties, water rights and other intangibles owned or utilized by or for the benefit of Seller in connection therewith (the "Property").

Seller wishes to sell the Property to Buyer;

In consideration of the mutual agreements herein, and other good and valuable consideration, including the sum of Ten Dollars (\$10.00) paid to Seller by Buyer, the receipt of which is hereby acknowledged, Seller agrees to sell to Buyer and Buyer agrees to purchase the Property from Seller, subject to the following terms and conditions:

1. PURCHASE PRICE, PAYMENT, SURVEY

1.1 Purchase Price; Payment; Survey. The total Purchase Price shall be \$ 8,500,000 - 100. The Purchase Price shall be paid in cash at closing. The Buyer shall have a new survey of the Property prepared at Buyer's expense which will be utilized to convey title to the Property, and Buyer and Seller must mutually agree on an area of approximately 1.5 acres to be retained by Seller adjacent to Seller's personal house on an adjoining parcel.

1.2 Earnest Money Deposit. An earnest money deposit in the amount of Ten Thousand Dollars (\$10,000) ("Earnest Money Deposit") shall be deposited with Escrow Agent by Buyer within ten (10) business days after the Effective Date. All deposits made as earnest money shall be deemed included within the meaning of the term Earnest Money Deposit for all purposes. The Earnest Money Deposit shall be held as specifically provided in this Agreement and shall be applied to the Purchase Price at Closing.

1.3 Prorations. Ad valorem taxes and matters of income and expense, if any, and other items customarily prorated in transactions of this kind shall be prorated as of midnight of the day preceding the Closing Date. In the event the Property has been assessed for property tax purposes at such rates or with exemptions that would result in additional taxes and assessments for prior tax years or for the Closing tax year being assessed because of supplemental taxes resulting from delayed assessments or other causes, including without limitation Buyer's change in land usage or the change in ownership of the Property attributable to Buyer's acquisition of the Property (known variously as "rollback", "agricultural recoupment" or "school board revaluation" taxes), Seller shall pay all such taxes and assessments when due, prorated as of midnight of the day preceding the Closing Date.

1.4 Closing Costs.

(a) Seller shall pay:

(1) For the costs to prepare the Warranty Deed; and

- (2) Seller's attorneys' fees.
- (b) Buyer shall pay:
- (1) Any transfer taxes on the deed;
 - (2) The costs of the title insurance;
 - (3) The costs of any Phase I environmental site assessment to be obtained by Buyer, if any;
 - (4) The costs of a Survey of the Property;
 - (5) The costs of recording the deed; and
 - (6) Buyer's attorneys' fees.

2. INSPECTION PERIOD AND CLOSING

2.1 Inspection Period. Buyer shall have an Inspection Period which begins on the next business day following the date upon which the Agreement, fully executed by Seller, Buyer and Escrow Agent, has been received by Buyer (the "Effective Date") and ends at midnight one hundred eighty (180) days later ("Inspection Period"). Buyer shall have the Inspection Period within which to physically inspect the Property, to conduct its due diligence and to inspect all books, records and accounts of Seller related thereto. Buyer and Buyer's officers, employees, consultants, attorneys and other authorized representatives, shall have the right to reasonable access to the Property and to all records of Seller related thereto (including without limitation title information, surveys, environmental assessment reports and other information concerning the condition of the Property), at reasonable times during the Inspection Period for the purpose of inspecting the Property, taking soil and ground water samples, conducting hazardous materials and wetlands inspections, tests and assessments, reviewing the books and records of Seller concerning the Property and otherwise conducting its due diligence review of the Property. Buyer hereby agrees to indemnify and hold Seller harmless from any damages, liabilities or claims for property damage or personal injury and mechanics or construction liens caused or created by Buyer and its agents and contractors in the conduct of such inspections and investigations, other than pre-existing conditions merely discovered by Buyer or its agents or contractors. Buyer will restore Seller's property to a clean and level condition after any studies, testing or inspections Buyer has performed on the Property, and shall repair any damage cause by said studies, testing or inspections. Seller shall cooperate with and assist Buyer in making such inspections and reviews. Seller shall make available to Buyer such of the foregoing as may be in Seller's possession in order to facilitate Buyer's due diligence. Seller shall give Buyer any authorizations which may be required by Buyer in order to gain access to records or other information pertaining to the Property or the use thereof maintained by any third party, governmental or quasi-governmental authorities or organizations. The indemnities contained in this section shall survive the termination of this Agreement. Buyer shall have the option to extend the Inspection Period for two (2) thirty (30) day periods by providing written notice to the Seller prior to the expiration of the then Inspection Period.

2.2 Buyer's Termination Right. Within the Inspection Period, Buyer may, in its sole discretion, for any reason or for no reason, elect whether or not to proceed with closing under this Agreement, which election shall be made by written notice to proceed to Seller given within the Inspection Period. If such notice is not timely given, this Agreement and all rights, duties and obligations of Buyer and Seller hereunder, except any which expressly survive termination, shall terminate, whereupon Escrow Agent shall forthwith return to Buyer the Earnest Money Deposit. If such notice to proceed is timely given to Seller, this Agreement and all rights, duties and obligations of Buyer and Seller hereunder (including without limitation their respective obligations to close the transaction), shall, subject to the terms and conditions hereof, become fully binding and the Earnest Money Deposit shall become

nonrefundable except for the failure of a closing condition or the default of Seller hereunder. If Buyer terminates, Buyer shall provide Seller copies of any surveys, studies, inspections, or testing Buyer has had performed on the Property, but the same shall be provided without warranty and the Buyer cannot verify the accuracy of any such surveys, studies, inspections, or testing.

2.3 Time and Place of Closing. The Closing shall take place at the offices of Escrow Agent at 10:00 A.M. no later than thirty (30) days after the end of the Inspection Period as extended.

3. WARRANTIES, REPRESENTATIONS AND COVENANTS OF SELLER

Seller warrants and represents as follows as of the date of this Agreement and as of the Closing and where indicated covenants and agrees as follows:

3.1 Title. Seller is the owner in fee simple of all of the Property.

3.2 Eminent Domain/Condemnation. No condemnation or eminent domain proceedings are now pending or threatened concerning the Property, and Seller has received no notice from any governmental agency or authority or other potential condemnor concerning any right-of-way, utility or other taking which may affect the Property.

3.3 Environmental Matters. To the best of Seller's knowledge the Property does not now contain nor has the Property contained any underground storage tanks, material amounts of hazardous material or landfills. Seller has used no hazardous material at the Property nor has Seller permitted any other person to do so. To the best of Seller's knowledge the Property contains no vegetation, animal species or significant historic/archaeological sites which are subject to special regulations or limitations under local, state or federal laws, regulations or orders.

3.4 Foreign Investment and Real Property Tax Act. Seller is not a "foreign person" within the meaning of Section 1445 of the Internal Revenue Code, or under any comparable state statutes which are applicable to this transaction. At Closing Seller will execute and deliver to Buyer an affidavit regarding such matters. If Seller fails to execute and deliver such affidavit, Buyer may deduct and withhold from the Purchase Price such amounts as Buyer may be required to withhold in order to satisfy any of Buyer's tax withholding obligations under such statutes or regulations promulgated pursuant thereto.

4. POSSESSION; RISK OF LOSS

4.1 Possession. Possession of the Property will be transferred to Buyer at the conclusion of the Closing.

4.2 Risk of Loss. All risk of loss to the Property shall remain upon Seller until the conclusion of the Closing. If, before Closing, any material portion of the Property is damaged by casualty, or if any material portion of the Property is taken or threatened by eminent domain, or if there is a material obstruction of access by virtue of a taking by eminent domain, Seller shall, within ten (10) days of such damage or taking, notify Buyer thereof and Buyer shall have the option to:

(a) terminate this Agreement upon notice to Seller given within ten (10) business days after such notice from Seller, in which case Buyer shall receive a return of the Earnest Money Deposit; or

(b) proceed with the purchase of the Property, in which event Seller shall assign to Buyer all Seller's right, title and interest in all amounts due or collected by Seller under applicable insurance policies or as condemnation awards. In such event, the Purchase Price shall be reduced by the amount of any insurance deductible to the extent it reduces the insurance proceeds payable.

4.3 USA Patriot Act.

(a) None of the funds to be used for payment by Buyer of the Purchase Price will be subject to 18 U.S.C. §§ 1956-1957 (Laundering of Money Instruments), 18 U.S.C. §§ 981-986 (Federal Asset Forfeiture), 18 U.S.C. §§ 881 (Drug Property Seizure), Executive Order Number 13224 on Terrorism Financing, effective September 24, 2001, or the United and Strengthening America by Providing Appropriate Tools Required to Intercept and Obstruct Terrorism Act of 2001, H.R. 3162, Public Law 107-56 (the "US Patriot Act").

(b) Buyer is not, and will not become, a person or entity with whom U.S. persons are restricted from doing business with under the regulations of the Office of Foreign Asset Control ("OFAC") of the Department of Treasury (including those named on OFAC's Specially Designated and Blocked Persons list) or under any statute, executive order (including the September 24, 2001 Executive Order Blocking Property and Prohibiting Transactions With Persons Who Commit, Threaten to Commit, or Support Terrorism), the USA Patriot Act, or other governmental action.

5. TITLE MATTERS

Within ten (10) days after the Effective Date, Seller shall deliver to Buyer's counsel copies of any title information, including prior title policies and surveys, in Seller's possession. During the Inspection Period Buyer may order a title insurance commitment from a national title insurance company acceptable to it and a current survey from a reputable surveyor. Buyer will have thirty (30) business days after its receipt of both the title insurance commitment and survey within which to notify Seller in writing of any conditions, defects, encroachments or other objections to title or survey which are not acceptable to Buyer. Any matter disclosed by the title insurance commitment (other than liens removable by the payment of money) or by the survey which is not timely specified in Buyer's written notice to Seller shall be deemed a "Permitted Exception". Seller shall use reasonable and diligent efforts to cure all objections to title or survey by Closing. If such title defects and/or objections are not cured within said period, Buyer may (i) refuse to purchase the Property, terminate this Agreement and receive a return of the Earnest Money Deposit; or (ii) waive such objection(s) and close the purchase of the Property subject to them.

6. CONDITIONS PRECEDENT

6.1 Conditions Precedent to Buyer's Obligations. The obligations of Buyer under this Agreement are subject to satisfaction or written waiver by Buyer of each of the following conditions or requirements on or before the Closing Date:

(a) The title insurance commitment shall have been issued and "marked down" through Closing, subject only to Permitted Exceptions.

(b) The physical and environmental condition of the Property shall not have materially changed from the Effective Date, ordinary wear and tear excepted.

(c) Buyer must be able to extend water, sewer and electric utilities to the boundary of the Property with adequate capacity for Buyer's proposed use of the Property.

(d) Approval of the purchase of the Property and funding for the purchase of the same by the Rutherford County Commission and Rutherford County Board of Education.

(e) Buyer shall have received the following in form reasonably satisfactory to Buyer:

(1) A warranty deed in proper form for recording, duly executed, witnessed and acknowledged, and insured by the title insurance company, so as to convey to Buyer the fee simple title to the Property, subject only to the Permitted Exceptions; and

(2) An owner's affidavit, non-foreign affidavit and such further instruments of conveyance, transfer and assignment and other documents as may reasonably be required by the title insurance company in order to effectuate the provisions of this Agreement and the consummation of the transactions contemplated herein; and

(3) Such other documents as Buyer or the title insurance company may reasonably request to effect the transactions contemplated by this Agreement.

If any of the above contingencies are not satisfied to Buyer's satisfaction within Buyer's sole discretion, the Buyer may elect to either: (1) terminate this Agreement and receive a full refund of the Earnest Money Deposit; or (2) extend this Agreement by an additional thirty (30) days to give Seller time to satisfy the contingency, or (3) waive the contingency and proceed to closing.

6.2 Conditions Precedent to Seller's Obligations. The obligations of Seller under this Agreement are subject to Buyer having delivered to Seller at or prior to the Closing the balance of the Purchase Price and such other documents as Seller or the title insurance company may reasonably request to effect the transactions contemplated by this Agreement.

7. BREACH; REMEDIES

7.1 Breach by Seller. In the event of a breach of Seller's covenants or warranties herein and the failure of Seller to cure such breach within the time provided for Closing, Buyer may, at Buyer's election (i) terminate this Agreement and receive a return of the Earnest Money Deposit, and the parties shall have no further rights or obligations under this Agreement (except as survive termination); (ii) enforce this Agreement by suit for specific performance; or (iii) waive such breach and close the purchase contemplated hereby, notwithstanding such breach..

7.2 Breach by Buyer. In the event of a breach of Buyer's covenants or warranties herein and the failure of Buyer to cure such breach within the time provided for Closing, Seller's sole legal and equitable remedy shall be to terminate this Agreement and retain Buyer's Earnest Money Deposit as AGREED LIQUIDATED DAMAGES for such breach, and upon payment in full to Seller of such Earnest Money Deposit, the parties shall have no further rights, claims, liabilities or obligations under this Agreement (except as survive termination). *BUYER AND SELLER AGREE THAT IT WOULD BE IMPRACTICAL AND EXTREMELY DIFFICULT TO ESTIMATE THE DAMAGES SUFFERED BY SELLER AS A RESULT OF BUYER'S FAILURE TO COMPLETE THE PURCHASE OF THE PROPERTY PURSUANT TO THIS AGREEMENT, AND THAT UNDER THE CIRCUMSTANCES EXISTING AS OF THE DATE OF THIS AGREEMENT, THE LIQUIDATED DAMAGES PROVIDED FOR IN THIS SECTION REPRESENT A REASONABLE ESTIMATE OF THE DAMAGES WHICH SELLER WILL INCUR AS A RESULT OF SUCH FAILURE. THEREFORE, BUYER AND SELLER DO HEREBY AGREE THAT A REASONABLE ESTIMATE OF THE TOTAL NET DETRIMENT THAT SELLER WOULD SUFFER IN THE EVENT THAT BUYER DEFAULTS AND FAILS TO COMPLETE THE PURCHASE OF THE PROPERTY IS AN AMOUNT EQUAL TO THE EARNEST MONEY DEPOSIT (WHICH INCLUDES ANY ACCRUED INTEREST THEREON). SAID AMOUNT WILL BE THE FULL, AGREED AND LIQUIDATED DAMAGES FOR THE BREACH OF THIS AGREEMENT BY BUYER. THE PAYMENT OF SUCH AMOUNT AS LIQUIDATED DAMAGES IS NOT INTENDED AS A FORFEITURE OR PENALTY, BUT IS INTENDED TO CONSTITUTE LIQUIDATED DAMAGES TO SELLER.*

8. MISCELLANEOUS

8.1 Commissions. No Commissions are due in regards to this sale.

8.2 Notices. All notices and demands of any kind which either party may be required or may desire to serve upon the other party in connection with this Agreement shall be in writing, signed by the party or its counsel identified below, and shall be served (as an alternative to personal service) by

registered or certified mail, overnight courier service or facsimile transmission (followed promptly by personal service or mailing of a hard copy), at the addresses set forth below:

As to Seller: Jeffrey S. Dismukes and Ruby Dianne Dismukes
4604 Blackman Rd
(No P.O. Boxes)
Murfreesboro, TN
Telephone: _____
Email: _____

As to Buyer: Rutherford County Board of Education
Attn: James Sullivan
2240 Southgate Blvd.
Murfreesboro, TN 37128

With a copy to Jeff Reed
Buyer's Counsel: 16 Public Square North
Murfreesboro, TN 37130
Telephone: (615) 893-5522
Facsimile: (615) 849-2135
Email: jreed@mborolaw.com

With a copy to Hudson, Reed & Christiansen, PLLC
Escrow Agent: 16 Public Square North
(if required) Murfreesboro, TN 37130
Telephone: (615) 893-5522
Facsimile: (615) 849-2135

Any such notice or demand so served, shall constitute proper notice hereunder upon delivery to the United States Postal Service or to such overnight courier, or by confirmation of the facsimile transmission.

8.3 Time. Time is of the essence of this Agreement, provided that if any date upon which some action, notice or response is required of any party hereunder occurs on a weekend, state holiday, or national holiday, such action, notice or response shall not be required until the next succeeding business day.

8.4 Governing Law. This Agreement shall be governed by the laws of the state in which the Property is located.

8.5 Successors and Assigns. The terms and provisions of this Agreement shall be binding upon and shall inure to the benefit of the heirs, successors and permitted assigns of the parties. The Buyer may assign Buyer's rights and obligations under this Agreement to Rutherford County. Except as to Rutherford County, no third parties, including any brokers or creditors, shall be beneficiaries hereof or entitled to any rights or benefits hereunder.

IN WITNESS WHEREOF, the parties hereto have executed this Agreement as of the day and year first above written.

"BUYER"

RUTHERFORD COUNTY BOARD OF EDUCATION

By: _____
Claire D. Maxwell, Chairman

"SELLER"

Jeffrey S. Dismukes
JEFFREY S. DISMUKES

Ruby Dianne Dismukes
RUBY DIANNE DISMUKES

JOINDER OF ESCROW AGENT

1. Duties. Escrow Agent joins herein for the purpose of agreeing to comply with the terms hereof insofar as they apply to Escrow Agent. Escrow Agent shall receive and hold the Earnest Money Deposit in trust, to be disposed of in accordance with the provisions of this joinder and the foregoing Agreement.

2. Indemnity. Escrow Agent shall not be liable to any party except for claims resulting from the negligence or willful misconduct of Escrow Agent. If the escrow is the subject of any controversy or litigation, the parties to the Agreement shall jointly and severally indemnify and hold Escrow Agent harmless from and against any and all loss, cost, damage, liability or expense, including costs of reasonable attorneys' fees to which Escrow Agent may be put or which Escrow Agent may incur by reason of or in connection with such controversy or litigation, except to the extent it is determined that such controversy or litigation resulted from Escrow Agent's negligence or willful misconduct. If the indemnity amounts payable hereunder result from the fault of Buyer or Seller (or their respective agents), the party at fault shall pay and hold the other party harmless against such amounts.

3. Conflicting Demands. If conflicting demands are made upon Escrow Agent or if Escrow Agent is uncertain with respect to the escrow, the parties to the Agreement expressly agree that Escrow Agent shall have the absolute right to do either or both of the following: (i) withhold and stop all proceedings in performance of this escrow and await settlement of the controversy by final appropriate legal proceedings or otherwise as it may require; or (ii) file suit for declaratory relief and/or interpleader and obtain an order from the court requiring the parties to interplead and litigate in such court their several claims and rights between themselves. Upon the filing of any such declaratory relief or interpleader suit and tender of the Earnest Money Deposit to the court, Escrow Agent shall thereupon be fully released and discharged from any and all obligations to further perform the duties or obligations imposed upon it. Buyer and Seller agree to respond promptly in writing to any request by Escrow Agent for clarification, consent or instructions. Any action proposed to be taken by Escrow Agent for which approval of Buyer and/or Seller is requested shall be considered approved by the particular party if Escrow Agent does not receive written notice of disapproval within five (5) business days after a written request for approval is received by the party whose approval is being requested. Escrow Agent shall not be required to take any action for which approval of Buyer and/or Seller has been sought unless such approval has been received. No notice by Buyer or Seller to Escrow Agent of disapproval of a proposed action shall affect the right of Escrow Agent to take any action as to which such approval is not required.

4. Tax Identification. Seller and Buyer shall provide to Escrow Agent appropriate Federal tax identification numbers.

5. Continuing Counsel. Seller acknowledges that Escrow Agent is counsel to Buyer herein and Seller agrees that in the event of a dispute hereunder or otherwise between Seller and Buyer, Escrow Agent may continue to represent Buyer notwithstanding that it is acting and will continue to act as Escrow Agent hereunder, it being acknowledged by all parties that Escrow Agent's duties hereunder are ministerial in nature.

HUDSON, REED & CHRISTIANSEN, PLLC

By: _____
Its Authorized Agent

Date: _____

EXHIBIT “A”

All data on this website represents the 2025 tax year.

[Results](#) [GIS Maps](#) [Pictures](#)

Account #: R0134257
 Owner Name: DISMUKES JEFFREY S
 Owner Name 2: RUBY DIANNE
 Owner Address: 4604 BLACKMAN RD
 Owner Address 2:
 City, State, Zip: MURFREESBORO, TN 37129
 Property Address: 4324 BLACKMAN RD
 Jurisdiction: 000 - Rutherford
 Parcel #: 071-011.03-000
 Subdivision: G S DISMUKES & BARBARA W DISMUKES RLT WEST OF I24 - G S DISMUKES & BARBARA W DISMUKES RLT WEST OF I24
 Lot #:
 Map Book: 44-281
 Dimensions: NODATA
 Land Flag: NODATA
 Units/Acres/Sites: 86.08000
 Class: 11 - Agricultural
 Land Mkt Value: \$287,600
 Improvement Value: \$202,300
 Yard Item Value: \$54,500
 Total Market Appraisal: \$544,400
 Assessment %: %
 Assessment: \$136,100
 Greenbelt Value: NODATA

Jan 1st Owner Name:
 Jan 1st Owner Name 2:
 Jan 1st Owner Address:
 Jan 1st Owner Address 2:
 Jan 1st City, State, Zip: NODAT

[Pay your County Taxes Online](#)
[See your estimated County tax bill](#)

Building Information

[View Square Footage](#)

Sale Information

Non-Sale Document Information

SaleDate	SalePrice	Book	Page	GrantorName	GranteeName
2024-03-20	0.00	2421	2573		
2024-02-19	0.00	2413	3297		
1994-12-26	0.00	540	556		DISMUKES G S ETUX BARBARA REVOCABLE LIVING TRUST THE



ES.RI. Gerald B. Lee II (GIS Manager, City of Murfreesboro)



HOLLOWAY

Creative Learning

ACADEMY



CONTRACTUAL AGREEMENT

This agreement, dated this ____ day of April 2026 is to serve as a legal and binding agreement by and between the parties herein, for the purpose of defining the promises and warranties of and by Wilson Elementary School, located at 1545 Cut Off Rd. Murfreesboro, TN 37129 hereinafter referred to as “Benefactor” and Wilson Bank & Trust, referred to herein as “Sponsor.”

Wilson Bank & Trust does hereby agree to provide a total donation to Wilson Elementary School equal to and no greater than \$15,000.00 (Fifteen Thousand Dollars) payable in one lump sum.

For said donation, Benefactor does hereby agree to use the funds towards the purchase of **5 (five) new Cart Bundles as shown on attachment “A” and identified as Part # IFP7551_RC_CartBundle.**

As part of this agreement Wilson Bank and Trust will also receive the following benefits:

1. Wilson Bank and Trust info on the school’s digital sign
2. Wilson Bank and Trust signage on the fence near the playground (car riders and parents viewable).
3. Wilson Bank and Trust signage in the gym
4. Wilson Bank and Trust signage in the school
5. Wilson Bank and Trust signage at the front of the building

The Benefactor will work with the Sponsor’s marketing department to ensure approved logo and other marketing materials are used in all displays for the length of term of this agreement. The Sponsor will also have the ability to promote Wilson Bank and Trust products and seminars to the students, staff, and faculty of Wilson Elementary School.

The benefactor agrees to provide and pay for any necessary maintenance needed to ensure the Cart Bundles are operational for student activities and other events held in the school coinciding with the term of this agreement. This includes making sure any Wilson Bank & Trust branding is always clean, legible, and represents the Wilson Bank & Trust brand in a manner that is acceptable to Wilson Bank & Trust. If at any time, the Cart Bundles need to be replaced, the Wilson Bank & Trust branding will remain as part of this agreement in its original format for the remaining term of the agreement. The benefactor agrees to cover all costs related to the replacement of a new Cart Bundles if needed prior to the end of this agreement.

This agreement requires the Benefactor to open and maintain their full deposit account relationship with the sponsor during the term of this agreement. The relationship with the sponsor will remain at this level throughout the entire term of this agreement.

The Sponsor will have first right of refusal to extend this agreement at the end of the 5 (Five) year term upon negotiations between the two parties.

This binding agreement will be in place once signed through the completion of the 2031 school year.

BENEFACTOR: Wilson Elementary School

Angela Barnes / Principal

Date

SPONSOR: Wilson Bank and Trust

Scott Jasper, EVP – Chief Administration Officer

Date



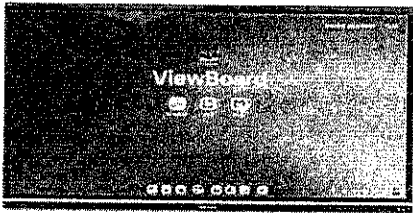
DANMARK
TECHNOLOGIES

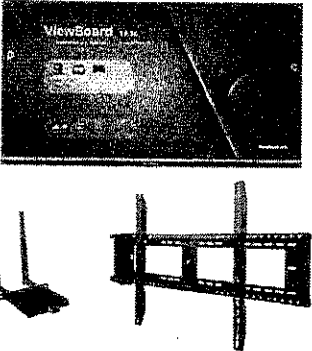
Danmark Technologies Pricing - TIPS Contract 240101

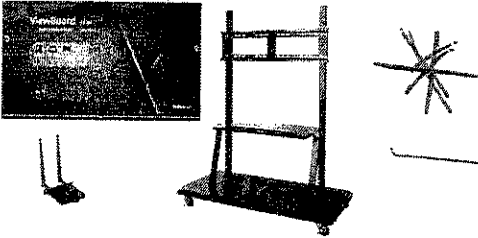
Account Team: Danielle Louque Customer Success Manager danielle@danmarktech.com

Ethan Wallen- Chief Operations Officer ethanwallen@danmarktech.com / Cell: 256-710-6171

<p>Quote Flyer Pricing list as of 1/4/2026 Expires 3/1/2026 (Refer to Quote for Terms/ Conditions/ Inclusions)</p>	<p>Freight/ Shipping: Included Free for all orders. QUOTE 5309</p>	<p>Lift gate w/ In Building delivery included in quote pricing</p>
--	--	--

	<p>IFP7551-RC-Panelonly 75" Panel and 5 year warranty Total price: \$2,198.36</p> <p>IFP8651-RC-Panelonly 86" Panel and 5 year warranty Total Price: \$2,865.66</p>
---	---

	<p>Part # IFP7551-RC-WallBundle Includes cart, 5 year warranty, manager advanced and wall mount</p> <p>Total Price: \$2,247.37</p> <p>Part # IFP8651-RC-WallBundle Includes cart, 5 year warranty, manager advanced and wall mount</p> <p>Total Price: \$2,914.66</p>
---	---

	<p>Part # IFP7551-RC-CartBundle Includes cart, 5 year warranty, manager advanced and cart mount</p> <p>Total Price: \$2,597.37</p>
	<p>Part # IFP8651-RC-CartBundle Includes cart, 5 year warranty, manager advanced and cart mount</p> <p>Total Price: \$3,264.66</p>

MEMORANDUM

DATE: April 30, 2026
TO: Dr. James Sullivan, Director of Schools
FROM: Monika B. Ridley, General Counsel
RE: Transfer Student Under Discipline (1)

The Board has been requested to admit a transfer student from another school system under discipline. The student has criminal charges.

According to Policy 6.318, the Board may deny admissions of any student (except those in state custody) when a student transfers from another school system while under suspension or expulsion.

Director of Schools' Recommendation: Deny admission.

Rutherford County Board of Education

Monitoring: Review: Annually, in October	Descriptor Term: Student Transportation Management	Descriptor Code: 3.400	Issued Date: 07/24/25
		Rescinds: 3.400	Issued: 08/08/24

1 Appointed directors of schools, in employing school transportation personnel, and boards of education,
2 in contracting for transportation services with persons owning equipment, are authorized to enter into
3 contracts for such services for periods of time as long as, but not exceeding, four (4) years from the date
4 of making the contracts, it being the purpose of this section to permit a reasonable degree of employment
5 security for such school transportation personnel. ¹

6 Each bus shall be equipped with the phone number for reporting safety complaints. This number shall
7 appear on the rear bumper.²

8 Buses shall also include notice in a conspicuous place that only authorized persons shall enter the bus.
9 This notice shall include appropriate contact information in case of an issue on the bus.³

10 All accidents, regardless of the damage involved, must be reported to the transportation supervisor,
11 including incidents in which any part of the bus contacts any other object or vehicle.

12 The Director of Schools shall develop procedures to ensure compliance with the statutory and
13 regulatory requirements for the transportation program.

14 RESPONSIBILITIES OF BUS OWNERS

15 1. Each school bus and all related equipment shall always be maintained in condition to operate
16 safely during the school year and shall conform to specifications as set forth by the State Board
17 of Education¹ and National Highway Traffic Safety Administration.

18 2. Each bus driver shall obey all applicable state rules and regulations.

19 3. A school bus owner shall give sixty (60) days written notice to the Board when he/she wishes to
20 terminate his/her bus operation contract.

21 4. The Contractor shall be required to maintain general liability insurance coverage from an
22 insurance company licensed in the State of Tennessee with an AM Best rating of A- or better, or
23 as otherwise acceptable to the Board, naming the Board as an additional insured. Each Contractor
24 shall maintain liability insurance with coverage limits as required by State law, but with auto
25 liability coverage limits of no less than \$1,000,000 for auto liability, \$1,000,000 for general
26 business liability, and a \$2,000,000 umbrella policy that provides additional coverage to the auto
27 liability and general business liability policies. The policies obtained by Contractor shall also
28 include uninsured and underinsured coverage of no less than \$1,000,000 per occurrence. The
29 deductibles under the policies shall be no more than \$5,000 unless the Board expressly approves
30
31
32

1 a different deductible maximum. Contractor may obtain more insurance coverage if they choose
2 to do so. The liability insurance of the Contractor shall be primary as between any other insurance
3 coverage. Contractor shall provide the Board with a written Certificate of Insurance confirming
4 coverage required under this Agreement no less than once annually and as requested by the
5 Board. Each policy shall include a provision that it may not be cancelled without the insurance
6 carrier providing thirty (30) days advance written notice to the Board. Upon the termination of
7 this contract for any reason, Contractor must provide a certificate of insurance to the Board within
8 five (5) days of the last day of service hereunder confirming insurance coverage with the
9 minimum coverages stated above for all claims and occurrences accruing through the
10 Contractor's last day of service. If a Contractor fails to maintain the insurance required hereunder
11 or fails to provide the Board proof of coverage upon the Board's request, the Board may suspend
12 or terminate this Contract. Contractor is also encouraged to obtain additional auto and business
13 liability and property casualty insurance coverage on Contractor's buses. Notwithstanding the
14 above, if applicable law allows the Board to provide liability insurance coverage for Contractors,
15 the Rutherford County Risk Management Office can obtain insurance coverage acceptable on
16 terms agreeable by the Board, and the Board elects to do so in writing, the obligations under this
17 Section 1.3 can be amended by written mutual agreement with Contractor.⁵
18

19 5. For Contractors who pay their insurance premiums yearly, the Contractors shall provide the
20 Certificate of Insurance to the Transportation Department by August 1 of each year. For
21 Contractors who pay their insurance premiums on less than a yearly schedule (monthly, quarterly,
22 etc.), Contractor shall provide a Certificate of Insurance to the Transportation Department by
23 August 1 of each year and, thereafter, monthly upon receipt of paycheck. The Board will withhold
24 payment to any contractor until contractor complies with the requirements of this policy.
25

26 6. If a Contractor changes insurance companies, Contractor shall provide a Certificate of Insurance
27 for the new policy to the Transportation Department within one (1) business day. The Board will
28 withhold payment to any contractor until contractor complies with the requirements of this
29 policy.
30

31 7. Each school bus owner must specify for the Director of Schools' approval the name of the
32 designated driver and at least one substitute driver of his/her bus.

33 The Director of Schools shall issue a certificate to school bus drivers that meet the qualifications
34 established by the Board.⁴

35 Annually, the Board shall require each school bus driver to have a physical and mental
36 examination. The Board shall revoke the certificate of any school bus driver found to be
37 physically, mentally, or morally unfit to operate a school bus. Additionally, a certificate shall be
38 revoked if the school bus driver is convicted of driving under the influence, vehicular assault,
39 vehicular homicide, aggravated vehicular homicide, or the manufacture, delivery, sale, or
40 possession of a controlled substance or analogue.⁵

41 8. The Contractor shall furnish all route information requested by the school system, such as student
42 names, school, grade, stops, number per stop, etc. Contractor shall supply by August 1 of each
43 year and update within ten (10) days of any change the name, address and phone number of the

1 person that will check the bus at the end of every route to confirm that no person remains on the
2 bus.

3 **DIRECTOR OF TRANSPORTATION⁶**

4 The Director of Schools shall appoint a Director of Transportation for the district. He/she shall be
5 responsible for the monitoring and oversight of transportation services for the district.

6 The Director of Transportation shall complete a student transportation management training program
7 upon appointment. Every year the Director of Transportation shall complete a minimum of four (4)
8 hours of training annually.

9 The Director of Schools shall ensure that training is completed and provide the state department of
10 education with appropriate documentation.

11 **COMPLAINT PROCESS⁷**

12 The following procedure will govern how students, teachers, staff, and community members shall
13 submit bus safety complaints:

- 14 1. All complaints shall be submitted to the transportation supervisor on forms designated by the
15 District on its website;
- 16 2. Forms may be submitted in person, via mail, via phone, or e-mail. In the case of a complaint
17 received via phone, the person receiving the phone call shall be responsible for filling out the
18 form and submitting it to the Transportation Supervisor.

19 The transportation supervisor shall begin an investigation of all bus safety complaints within twenty-
20 four (24) hours of receipt.

21 Within forty-eight (48) hours of receipt of the initial complaint, the transportation supervisor shall
22 submit a preliminary report to the Director of Schools or designee and a copy of the preliminary report
23 to the Contractor. This report shall include:

- 24 1. The time and date the complaint was received;
- 25 2. The name of the bus driver;
- 26 3. A copy or summary of the complaint; and
- 27 4. Any prior complaints or disciplinary actions taken against the driver.

28 Within sixty (60) school days of receiving the initial complaint, the transportation supervisor shall
29 submit a final written report to the Director of Schools or designee and a copy to the Contractor that
30 details the investigation's findings as well as the action taken in response to the complaint.

31 An annual notice of this complaint process shall be provided to parents and students. This information
32 shall be made available in the student handbook and district website.

33 **RECORDKEEPING⁸**

1 The transportation supervisor shall be responsible for the collection and maintenance of the following
2 records:

- 3 1. Bus driver credentials, including required background checks;
- 4
- 5 2. Driver state training records; and
- 6
- 7 3. Complaints received and any records related to the investigation and complaints.

8 **AWARDING AND RENEWING CONTRACTS**

9 The Director of Schools or his/her designee shall conduct a plan of action annually to determine potential
10 school bus service providers for the upcoming school year.

11 The Board of Education will contract with individual owners, partnerships, or corporations to provide
12 student transportation services for periods of time not to exceed the length of the bus transportation
13 services contract.

14 Service providers shall be reputable citizens with records of responsibility and sound business judgment.
15 If the service provider is a partnership or corporation, all partners or shareholders shall meet the
16 requirements of individual service providers, and their names shall be fully disclosed on the agreement
17 and all partners shall execute said agreement. If there is a change in the partners or their partnership
18 interest, the district shall be immediately notified and the Director of Schools may determine to cancel
19 the agreement unless all partners meet the requirements of these regulations.

20 Applications for new or existing contracts shall be sent to the Transportation Department. The
21 Transportation Department will approve or deny contracts based on the criteria set forth in the policy.

22 When a route becomes open, a random drawing will take place to award that route. The contractor
23 awarded the route will then be removed from the random drawing list until all approved contractors who
24 have applied for new routes have had a chance to be awarded a route.

25 If a contractor declines a route for which the contract was randomly selected, the contractor will be
26 removed from the random drawing list unless all other contractors decline and the route goes to an all
27 call or approved by the Board for contractors holding over ten (10) routes. **If no contractor accepts the
28 route after an all call, the Transportation Department will retain the route.**

29 Once the list for contractors is extinguished, random drawing restarts.

30 In addition, random drawings will be held for summer camp routes and Power Hour routes.

31 *Exchanges*

32 After a route/contract is awarded, the route remains the responsibility of the Contractor for the duration
33 of his/her contract with Rutherford County Schools. Exchanges may only occur **in June of every year**
34 with the express written permission of the Director of Schools or his/her designee, after communicating
35 with the Contractors and determining such an exchange creates a cohesive route management system

1 with positive long-term benefits for the students, parents, contractors, and the Transportation Department
2 and is essential to the functioning of Rutherford County Schools.

3 4 **CONTRACTED SERVICE PROVIDERS REQUIREMENTS**

5
6 Contracted Service Providers must meet the following requirements:

- 7 1. Contracted Service Providers shall be reputable citizens with records of responsibility and
8 sound business judgment;
- 9 2. Demonstrated previous competent performance as a service provider;
- 10 3. Meeting criteria for inclusion of the bus driver eligibility roster;
- 11 4. Proof acceptable to the Transportation Department of adequate funding sources;
- 12 5. Written documentation demonstrating the ability to acquire required insurance;
- 13 6. Satisfactory Local, State and Federal background check;
- 14 7. Documentation of employment and/or self-employment history with references;
- 15 8. Completion of a "Application of Intent" for the current school year.

16 17 **LEASING OR RENTAL OF BUSES**

18
19 Contractors who lease/rent buses for less than a period of thirty (30) days for repair must provide a
20 written lease to the Transportation Department. An extension of thirty (30) additional days may be
21 granted by the Transportation Department.

22
23 No contractor may lease/rent a bus to run a bus route for a period of more than thirty (30) days without
24 first obtaining approved of the Board and a written lease being in place.

25
26 The Contractor/Lessor will be responsible for the liability insurance, as required in the Bus
27 Transportation Services Contract, during the duration of the lease.

28 29 **APPLICATION OF INTENT TO PROVIDE SERVICES**

30
31 The Director of Schools or his/her designee shall conduct a plan of action annually to determine potential
32 school bus Contracted Service Providers for the upcoming school year. The district will continuously
33 accept applications of intent from parties interested in providing transportation services to the school
34 system. These applications will be maintained until the Director of Schools determines it is necessary to
35 award new contracts for transportation services. Periodically, as determined necessary, notification will
36 be placed in a daily newspaper published in Rutherford, Tennessee, notifying both existing and
37 potentially new Contracted Service Providers of the district's intent to award contracts for school bus
38 services. This is to allow all interested parties to file an application of intent. The completed application
39 of intent shall be returned to the Transportation Department as specified in the published intent to award
40 notification. An application of intent must be submitted in order for the interested party to be considered.
41 Applications of intent shall include all contact information for the interested party or entity and should
42 address the following areas:

- 43 A. The potential contractor's experiences, capabilities, and capacity;

- 1 B. The name and contact information for any school districts, where the party or entity may
- 2 have a previous service history;
- 3 C. The experience and qualifications of the key personnel who may be assigned to provide
- 4 services;
- 5 D. A safety record for the past five years including any accident;
- 6 E. A description and documentation of the party's or entity's financial health;
- 7 F. A description of the equipment to be used in the performance of assigned services;
- 8 G. Documentation from an insurer duly licensed and authorized to operate in the state of
- 9 Tennessee verifying the entity's or party's eligibility for insurance;
- 10 H. Three references from current or previous customers indicating service quality and
- 11 compliance;
- 12 I. A disclosure of any litigation with a current or former customer within the past three years.
- 13

14 **LIMITATION OF NUMBER OF CONTRACTS HELD**

15 No contractor shall have more than ten (10) contracts during any school year unless specifically approved
16 by the Board when unfilled routes exist. Any contractors holding more than ten (10) routes shall be
17 grandfathered and be allowed to continue their routes through the 2028/2029 school year. No contractor
18 with more than ten (10) routes shall be eligible for new routes unless expressly approved by the Board.
19 For purposes of determining the number of routes assigned to a contractor, any partnerships,
20 corporations, limited liability companies or other entities which have any common principal owners shall
21 be considered a single contractor.

Legal References

1. [TCA 49-6-2109; TRR/MS 0520-01-05; Public Acts of 2023, Chapter No. 122](#)
2. [TCA 49-6-2116\(d\)\(3\)](#)
3. [Public Acts of 2024, Chapter No. 548](#)
4. [TCA 49-6-2107](#)
5. [TCA 49-6-2107\(e\)\(1\); Public Acts of 2023, Chapter No. 122](#)
6. [TCA 49-6-2116\(a\)-\(c\)](#)
7. [TCA 49-6-2116\(d\)\(1\)-\(2\)](#)
8. [TCA 49-6-2116\(d\)\(5\)](#)

Cross References

Bus Safety and Conduct 6.308
Homeless Students 6.503



CONTRACTUAL AGREEMENT

This agreement, dated this ____ day of April 2026 is to serve as a legal and binding agreement by and between the parties herein, for the purpose of defining the promises and warranties of and by Blackman Elementary School, located at 586 Fortress Blvd, Murfreesboro, TN 37128 hereinafter referred to as “Benefactor” and Wilson Bank & Trust, referred to herein as “Sponsor.”

Wilson Bank & Trust does hereby agree to provide a total sponsorship to Blackman Elementary School equal to and no greater than \$10,000.00 (Ten Thousand Dollars).

For said sponsorship, Benefactor does hereby agree to use the funds to renovate the center logo on the Blackman Elementary gymnasium floor as referenced in the attached letter from Praters dated 3/30/2026. As part of this sponsorship Wilson Bank & Trust will also have the opportunity to place 2 (two) additional signs in the school gymnasium. The Benefactor will work with the Sponsor’s marketing department to ensure the approved logo and other marketing materials are used in all displays for the length of term of this agreement. The Sponsor will also have the ability to promote Wilson Bank and Trust products and seminars to the students, staff, and faculty of Blackman Elementary School.

The benefactor agrees to provide and pay for any necessary maintenance needed to ensure the signs are visible for all practices, games, and other events held in the gym coinciding with the term of this agreement. This includes making sure any Wilson Bank & Trust branding is always clean, legible, and represents the Wilson Bank & Trust brand in a manner that is acceptable to Wilson Bank & Trust. If at any time, the Blackman Elementary logo needs to be replaced, the Wilson Bank & Trust branding will remain as part of the contract in its original format for the remaining term of the agreement. The benefactor agrees to cover all costs related to the replacement of the new logo if needed prior to the end of this agreement.

This agreement requires the Benefactor to open and maintain their full deposit account relationship with the sponsor during the term of this agreement. The relationship with the sponsor will remain at this level throughout the entire term of this agreement.

The Sponsor will have first right of refusal to extend this agreement at the end of the 5 (Five) year term upon negotiations between the two parties.

This binding agreement will be in place once signed through the completion of the 2031 school year.

BENEFACTOR: Blackman Elementary School

Lorie Gober / Principal

Date

SPONSOR: Wilson Bank and Trust

Scott Jasper, EVP – Chief Administration Officer

Date



Mar 30, 2026

Lorie Gober
Blackman Elementary School
goberl@rcschools.net

Dear Lorie,

We are pleased to submit the following quotation for the renovation of the center logo in the gymnasium at **BLACKMAN ELEMENTARY SCHOOL**. This quotation is based on performance according to the following specifications.

We propose to sand off the existing logo, after which the floor will be thoroughly cleaned and abraded using the appropriate screen discs. Following the screening process all dust will be removed in preparation for the painting of a new center logo. Two coats of water based finish will be applied.

The total price for this project including all labor and materials is **\$7,200.00*****

***** This service must be done in conjunction with the annual abrade and recoat.**

Payment Terms: Payment is due upon completion of work. We accept all forms of payment. There is a 3% convenience fee if a credit card is used. Wiring information available upon request.

Before We Arrive: Note: The gym floor must be clean before our crew arrives. All items and trash must be removed from the gym floor including debris, gum, tape, tape residue, ink, etc., prior to starting the screening process. Praters is not responsible for the coating over any trash, gum, tape, tape residue, ink, etc.

MARKETING

Content Use: Blackman Elementary School agrees to allow Praters Inc. to capture media content of the build, installation, execution, and tear down of their product(s) as well as the event and/or activation that includes their product(s). Praters Inc. retains the right to utilize any content captured for internal & external documents and for digital sharing via pratersflooring.com, @PratersFlooring social networks, the Praters Flooring blog, and monthly newsletter. Praters Inc. agrees to withhold the release of any captured content until Praters Inc. is released to do so by Blackman Elementary School or until their product(s) have become accessible to the public. Praters Inc. agrees to share all captured content to Blackman Elementary School at their request for use on their media sites. Please provide all social media handles and tags so Praters Inc. can follow, share and include Blackman Elementary School in our marketing.

Collaboration: Praters Inc. agrees to share all captured content to Blackman Elementary School at their request for use on their media sites. Please provide all social media handles and tags so Praters Inc. can follow and share Blackman Elementary School's marketing and tag Blackman Elementary School in ours.

GUARANTEE

All our work is guaranteed against defects in materials and workmanship for a period of one year. At your request, we will submit license numbers, certificates of general liability and worker's compensation insurance.

Thank you for the opportunity to be of service. Please call if you have any questions



Amy Daniel

We agree with the scope of work, floor prep requirements, quoted price and payment terms outlined above.

(Customer Representative Signature)

(Date)

(Customer Representative Printed Name)

Invoice Information:

PO: _____

Accounting Contact: _____

Accounting Phone / Email: _____

Address: _____

Onsite Contacts:

On-site Contact Name: _____

On-site Contact Phone/Email: _____

Rutherford County Schools

Application for Campus Construction Project

Before any request for construction of proposed buildings will be forwarded to the Rutherford County School Board, the following form must be filled out in full and submitted to the Rutherford County Schools Engineering and Construction Department with a letter from the School Principal, a site plan, floor plan and elevations (if applicable), a full estimate, and schedule.

1. School Name Blackman Middle
2. Principal Dr. Jackson
3. Project Name Football storage
4. Assistant Principal who is overseeing the project Mr. Smith
5. Does project support recreational sports, athletics or education? athletics
6. Does this project meet all gender equity criteria? Yes
7. What department is this project being constructed for? (I.E. Baseball, softball, band, FFA, etc.) Football
8. What is the anticipated cost for this project (this should include all utility connection fees, building permits, inspection, and construction). Attach and submit a detailed estimate. \$3905.17 please see attached
9. What is the funding source and are funds currently available: (Grant, Booster Club, etc.)List all sources. The funding for this project will come from Blackman Middle School Football
10. If a grant or funded by a foundation/donor/ charitable organization, what is the foundations name? N/A
Do construction plans meet criteria for funding?
11. If funded by a local financial institution, has the loan been approved and who is the guarantor for loan N/A
12. Do you have a site layout showing where this project will be constructed on campus? Yes, it will placed inside of the athletic facility near the football
13. Has RCS Engineering & Construction reviewed project location? Are there any conflicts in utilities or easements? Mr. Faulk has approved the location and there are no conflicts with the
14. Has MTEMC, CUD, MWSD or other local utilities been contacted for service connection if required? There are no connection that need to be made. therefore these services are
15. Are plans drawn and stamped by Architect/ Engineer? yes

16. Have plans been submitted to Rutherford County Codes or Murfreesboro City Building Codes Offices for review and/or approval. (LaVergne City Codes, Smyrna City Codes, Murfreesboro City Codes) N/A
17. What is your time line for completion of project? When will it start and when will it be completed? We would like to have the building as soon as the board approves it. 5/15/26 at the latest
18. If stated that construction project is at no cost to school Board all cost should be included in project. This includes electrical, plumbing, and mechanical services. There is no cost to the board and the total cost for this project is \$3905.17
19. Do you have a contractor for constructing/completing the project? What is the name of Contractor? If no, who will be overseeing the project from the community and who will be doing the work? Old Hickory Buildings is the company that is being used to build and delivery the storage

16. Have plans been submitted to Rutherford County Codes or Murfreesboro City Building Codes Offices for review and/or approval. (LaVergne City Codes, Smyrna City Codes, Murfreesboro City Codes) N/A
17. What is your time line for completion of project? When will it start and when will it be completed? We would like to have the building as soon as the board approves it. 5/15/26 at the latest
18. If stated that construction project is at no cost to school Board all cost should be included in project. This includes electrical, plumbing, and mechanical services. There is no cost to the board and the total cost for this project is \$3905.17
19. Do you have a contractor for constructing/completing the project? What is the name of Contractor? If no, who will be overseeing the project from the community and who will be doing the work? Old Hickory Buildings is the company that is being used to build and delivery the storage

Rutherford County Schools

Application for Campus Construction Project

Before any request for construction of proposed buildings will be forwarded to the Rutherford County School Board, the following form must be filled out in full and submitted to the Rutherford County Schools Engineering and Construction Department with a letter from the School Principal, a site plan, floor plan and elevations (if applicable), a full estimate, and schedule.

1. School Name Blackman Middle
2. Principal Dr.
3. Project Name Football storage
4. Assistant Principal who is overseeing the project Mr. Smith
5. Does project support recreational sports, athletics or education? athletics
6. Does this project meet all gender equity criteria? Yes
7. What department is this project being constructed for? (I.E. Baseball, softball, band, FFA, etc.) Football
8. What is the anticipated cost for this project (this should include all utility connection fees, building permits, inspection, and construction). Attach and submit a detailed estimate. \$3905.17 please see attached
9. What is the funding source and are funds currently available: (Grant, Booster Club, etc.) List all sources. The funding for this project will come from Blackman Middle School Football
10. If a grant or funded by a foundation/donor/ charitable organization, what is the foundations name? N/A
Do construction plans meet criteria for funding?
11. If funded by a local financial institution, has the loan been approved and who is the guarantor for loan N/A
12. Do you have a site layout showing where this project will be constructed on campus? Yes, it will placed inside of the athletic facility near the football
13. Has RCS Engineering & Construction reviewed project location? Are there any conflicts in utilities or easements? Mr. Faulk has approved the location and there are no conflicts with the
14. Has MTEM, CUD, MWSD or other local utilities been contacted for service connection if required? There are no connection that need to be made, therefore these services are
15. Are plans drawn and stamped by Architect/ Engineer? yes

Prepared by: : 03/25/2026 11:40am (CDT)

Old Hickory Buildings
Cust. Service: (615) 890-8075
www.oldhickorybuildings.com



Stones River Trailers
1515 S. Church St.
Murfreesboro.TN 37130



Scan Me!

Purchase Type: **ORDER-SHOP BUILT**
Building Type: **Metal Shed**
Size: **10x16**
Reference #: **Z06AKX8B**

Date: **03/25/2026**
Salesman:

*Revisions on Custom Orders subject to fee, see below for details

All Sizes Nominal *12' wide measured eave to eave* *7' & 8' Tall Walls
Measured on Outside*

NOTES/COMMENTS

Customer Name

(Name must match ID)

Delivery Address: _____
(City) (State)TN (Zip)* _____
(County) _____
Primary Phone: _____
Cell Phone: _____

Mailing Address: _____
City: _____
State: _____
ZIP: _____
Work Phone: _____
Email: **NO EMAIL**

Cash Sale

*Checks payable to:
Old Hickory Buildings, LLC*

	Amount
Sales Price	\$3,895.00
Option Cost	\$302.00
Subtotal	\$4,197.00
Discount	\$629.55
Total (Pre-Tax)	\$3,567.45
7% Tax	\$249.72
Up to \$1600	\$44.00
Up to \$3200	\$44.00
Tax	\$337.72
Total Cost	\$3,905.17

Free setup includes leveling the building to the specifications on our blocking diagram (customer may request a copy from dealer) starting with the high corner at ground level or one four inch concrete block high. Buildings may then be leveled to a maximum of 3 feet at the highest corner. If leveling requires one (1) foot or less, pressure treated wood may be used. If placement of the building requires it to be set on concrete blocks, the customer must have them ready PRIOR to delivery OR have a clear agreement with the driver to supply the blocks at a price to be negotiated with the driver. In very rare cases, underground footers may be required by local building codes. Old Hickory Buildings does not offer digging or footer services, and these services are not included in free setup. However, we can work with Customer or a contractor when required for an additional cost. Free delivery covers one trip up to thirty (30) miles one way. Trips over thirty (30) miles are subject to a \$4.00/mile (8, 10, & 12 ft wide) or \$5.00/mile (14ft wide) or \$6.00/mile (16ft wide) charge one way. Customer will be responsible for any additional mileage charge as well as the cost of any additional trips. * A non-refundable fee will be charged on cancellations or revisions of custom orders as follows: 10% on cash sales of 8ft, 10ft, & 12ft wide buildings, 20% on cash sales of 14ft & 16ft wide buildings, up to 50% on any build on site order; or, on rent to own sales, the security deposit plus first month's rent.

HORIZONTAL METAL

QUOTE ONLY - NOT AN ORDER. PRICES SUBJECT TO CHANGE.

Prepared by: : 03/25/2026 11:40am (CDT)

Old Hickory Buildings, LLC - QUOTE SHEET

Quote Only - Reference #: Z06AKX8B

Sales Lot Stones River Trailers Date 03/25/2026
Customer Name _____ Bldg Type/Size 6'7" Metal Shed 10x16

Bldg Type	Metal
Flooring	Engineered Panels T&G
Roof	Gallery Blue - Metal
Siding Type	Metal
Exterior Finish	Metal
Wall Color	Ash Gray - Metal
Trim Color	Gallery Blue - Metal - Painted
Door Color	Ash Gray - Metal
Trim on Door Color	
Shutter Color	

Item	Price	Qty	Price Total
Double Doors	INCLUDED		
2x6 Floor Joists	0.40 / SF	160	\$64.00
Shelves	17.00 LF	14	\$238.00
TOTAL OPTIONS PRICE			\$302.00

Notes/Comments

QUOTE 03/25/2026

HORIZONTAL METAL

QUOTE ONLY - NOT AN ORDER. PRICES SUBJECT TO CHANGE.

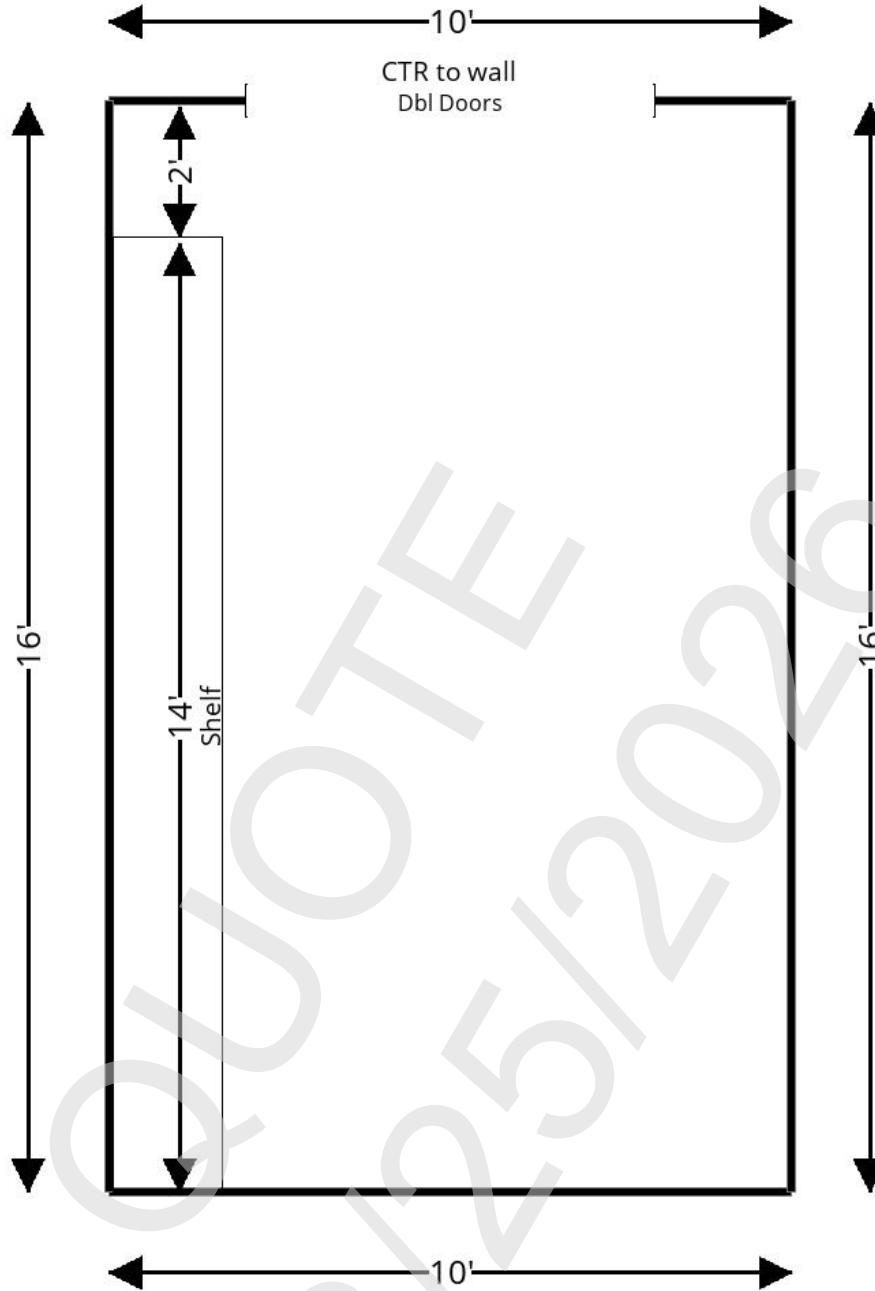
Prepared by: : 03/25/2026 11:40am (CDT)

Old Hickory Buildings, LLC - DRAWING SHEET

Please send along with work order and order sheet on all custom orders - Reference #: Z06AKX8B

Sales Lot Stones River Trailers Date 03/25/2026
Customer Name _____ Bldg Type/Size 6'7" Metal Shed 10x16

FRONT



RIGHT

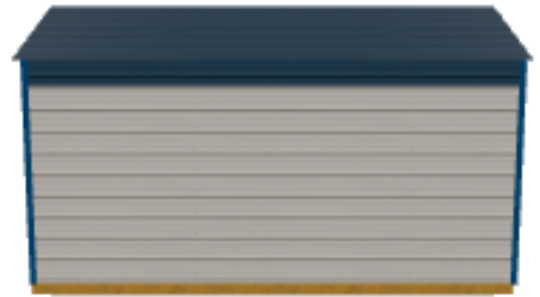
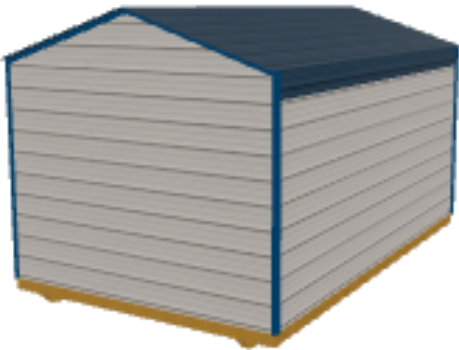
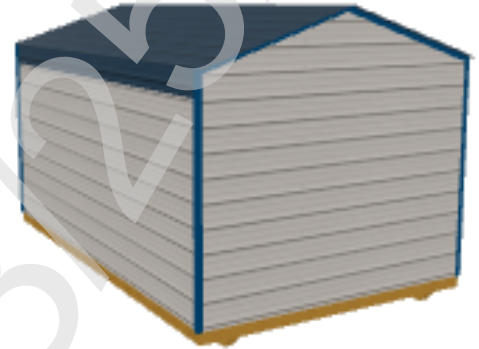
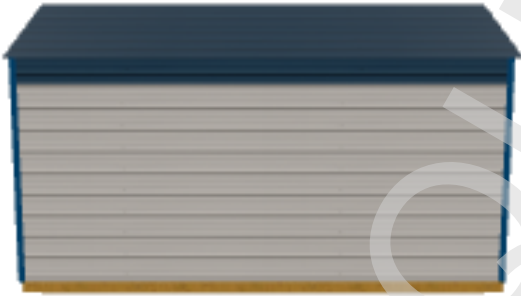
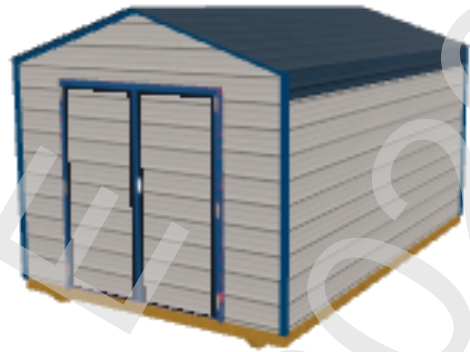
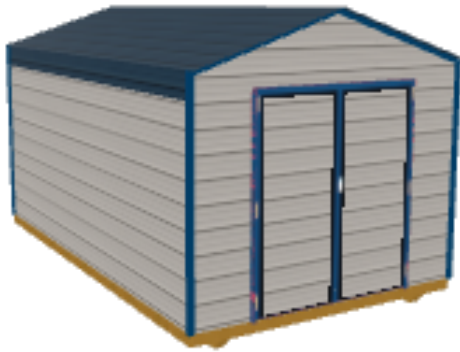
LEFT

HORIZONTAL METAL

BACK

Roof ridge runs from FRONT to BACK

QUOTE ONLY - NOT AN ORDER. PRICES SUBJECT TO CHANGE.



QUOTE ONLY - NOT AN ORDER. PRICES SUBJECT TO CHANGE.

Old Hickory Buildings, LLC - Additional Terms, Conditions, and Warranties

Please send along with work order, order sheet, and drawing sheet on all custom orders - Reference #: Z06AKX8B

Sales Lot	Stones River Trailers	Date	03/25/2026
Customer Name		Bldg Type/Size	6'7" Metal Shed 10x16

Additional Terms, Conditions and Warranties

1. SALE IS NOT FINAL. This Agreement is subject to approval and execution by Old Hickory's corporate office. Old Hickory has the right to refuse any sale up until the time when the building is set up at customer's location. Old Hickory shall have the right to correct any errors in this Agreement concerning pricing or taxes.

2. LIMITED WARRANTY. Customer will receive a limited five-year warranty. The details of this warranty can be found online at www.oldhickorybuildings.com. Customer acknowledges that Customer has been provided a copy of this warranty or have had adequate time to review this warranty online. Discounted Buildings do not carry a warranty on cosmetic issues.

3. DELIVERY AND SETUP. Old Hickory strives to deliver all buildings in a timely manner consistent with our customers' expectations; however, Old Hickory does not guarantee dates or times of delivery. Customer expressly understands that inclement weather, vehicle problems, difficulties at other delivery locations, and/or other unforeseen circumstances can affect the date and time of delivery. Old Hickory is not responsible for any of Customer's lost work time associated with any delays or rescheduled deliveries. Customer represents that the delivery location will be accessible by a truck and trailer. It is the Customer's responsibility to decide if ground conditions are unsuitable or too wet for delivery. Customer is responsible for informing the delivery driver of any utility hazards or any other relevant matter prior to commencement of setup.

4. LIMITATIONS. Old Hickory is not responsible for permits, snow/wind load requirements, covenant searches, restrictions, setbacks, yard damage, or underground damage. Please contact your local building inspector and/or homeowner's association for information on requirements and restrictions. Customer shall be solely responsible for and shall obtain any necessary permits PRIOR TO installation. Customer agrees to indemnify and hold harmless Old Hickory and its independent contractor delivery drivers for any yard damage done during installations and/or any violation of any government ordinance or code resulting from the installation of any Old Hickory product at Customer's location. Customer releases Old Hickory and its independent contractor delivery drivers from any claims for punitive, indirect, incidental, special, or consequential damages.

5. PAYMENT. Drivers do not take credit cards. All balances due must be paid by cash or check on delivery. Balance due paid by credit card must be paid prior to delivery. Credit card price is 3% higher than discounted cash price listed on the work order. In the event building is not paid for before or on delivery, driver will not leave building and additional trip charges will be incurred. If delivery has not been made within 90 days, cash customers must pay balance due, rental customers must pay the rent due or other amounts as required by the rental purchase agreement, or the order is subject to cancellation and cancellation fee will be charged. All amounts not paid at delivery will be considered past due. On cash sales, customer may choose option to postpone construction start date and extend requirement to pay within 90 days for an additional 10% non-refundable fee paid at the time of sale. If customer chooses to postpone construction start date, the customer still must pay the balance due within 90 days of construction completion regardless of whether building is delivered.

6. CANCELLATIONS AND REFUNDS. If Customer is dissatisfied with the Old Hickory product upon acceptance of delivery by Customer or Customer's authorized agent, Customer's sole recourse is to file a warranty claim.

7. LATE PAYMENT, COSTS OF COLLECTION, AND RETRIEVAL. Unless otherwise prohibited by state law, if Old Hickory must engage in any effort to secure payment or otherwise seek to compel Customer to fulfill any of Customer's obligations under this Agreement, Customer agrees to reimburse Old Hickory for any and all reasonable attorney fees, costs, and other expenses. For cash sales, Old Hickory may charge a monthly late fee equal to 10% of the amount due or the maximum amount allowed by law. FOR CASH SALES, CUSTOMER EXPRESSLY ACKNOWLEDGES AND AGREES THAT A FAILURE TO PAY ALL AMOUNTS DUE ENTITLES OLD HICKORY THE RIGHT TO RETRIEVE THE OLD HICKORY PRODUCT AND CUSTOMER FURTHER WAIVES ANY AND ALL RIGHTS AND/OR CLAIMS FOR REFUND FOR ANY PAYMENTS MADE PRIOR TO SUCH RETRIEVAL UNLESS THE PAYMENTS MADE EXCEED THE DEPOSIT PLUS EXPENSES INCURRED BY OLD HICKORY IN RETRIEVING THE OLD HICKORY PRODUCT.

8. REPRESENTATIONS AND WARRANTIES. Customer hereby represents and warrants to Old Hickory, that Customer is the owner, or an authorized agent of the owner, of the property on which the Old Hickory product is to be delivered and set up.

9. SEVERABILITY; APPLICABLE LAW AND VENUE; CLASS ACTION WAIVER. If any provision of this Agreement is invalid, illegal, or incapable of being enforced by reason of any rule of law, public policy, or otherwise, any remaining provisions of this Agreement shall nevertheless remain in full force and effect. Unless otherwise prohibited by state law, this Agreement will be governed and construed by the laws of the State of Tennessee, without giving effect to its choice of law principles, and Customer agrees that any legal action arising out of this Agreement instituted by Customer will be brought, and consents to the jurisdiction and venue in, Rutherford County, Tennessee. Customer specifically agrees that any claims arising out of or relating to this Agreement must be brought by Customer in an individual capacity and expressly waives any right or option for Customer to bring any claim related in any way to this Agreement as a plaintiff or class member in any representative action.

10. ELECTRONIC NOTICE; CONSENT TO USE INFORMATION. Customer and Old Hickory have agreed to conduct all and/or portions of this transaction by electronic means, including, but not limited to, acceptance by Customer of any revisions regarding errors in pricing or taxes. Customer consents to Old Hickory's use of any information disclosed by Customer for the purposes of completing the transactions contemplated in this document, for providing any ongoing support and services, and otherwise in accordance with Old Hickory's privacy policy. Such consent includes the disclosure of such information to third parties which is reasonably necessary for such purposes. Customer may request a copy of Old Hickory's privacy policies and practices through the above contact information.

Customer agrees to be bound by the terms, conditions, and warranties set forth herein and expressly acknowledges that there are no agreements of any type or kind other than those set forth herein.

QUOTE ONLY - NOT AN ORDER. PRICES SUBJECT TO CHANGE.

Prepared by: : 03/25/2026 11:40am (CDT)

Rutherford County Schools

Application for Campus Construction Project

Before any request for construction of proposed buildings will be forwarded to the Rutherford County School Board, the following form must be filled out in full and submitted to the Rutherford County Schools Engineering and Construction Department with a letter from the School Principal, a site plan, floor plan and elevations (if applicable), a full estimate, and schedule.

1. School Name **OAKLAND HS**
2. Principal **John MARSHALL**
3. Project Name **Greenhouse**
4. Assistant Principal who is overseeing the project **SHAYNE MARTIN**
5. Does project support recreational sports, athletics or education? **EDUCATION**
6. Does this project meet all gender equity criteria? **YES**
7. What department is this project being constructed for? (I.E. Baseball, softball, band, FFA, etc.)
AGRICULTURE
8. What is the anticipated cost for this project (this should include all utility connection fees, building permits, inspection, and construction). Attach and submit a detailed estimate.
10K ESTIMATE
9. What is the funding source and are funds currently available: (Grant, Booster Club, etc.) List all sources. **School, FFA, SPONSORS**
10. If a grant or funded by a foundation/donor/ charitable organization, what is the foundations name?
Do construction plans meet criteria for funding?
11. If funded by a local financial institution, has the loan been approved and who is the guarantor for loan **N/A**
12. Do you have a site layout showing where this project will be constructed on campus? **YES**
13. Has RCS Engineering & Construction reviewed project location? Are there any conflicts in utilities or easements?
14. Has MTEMC, CUD, MWSD or other local utilities been contacted for service connection if required?
15. Are plans drawn and stamped by Architect/ Engineer? **NO**

16. Have plans been submitted to Rutherford County Codes or Murfreesboro City Building Codes Offices for review and/or approval. (LaVergne City Codes, Smyrna City Codes, Murfreesboro City Codes)
17. What is your time line for completion of project? When will it start and when will it be completed? *August 2026*
18. If stated that construction project is at no cost to school Board all cost should be included in project. This includes electrical, plumbing, and mechanical services.
19. Do you have a contractor for constructing/completing the project? What is the name of Contractor? If no, who will be overseeing the project from the community and who will be doing the work? *N/A*

mapping)



New Greenhouse

Budget Amendment # 1

School Nutrition Fund 143 Budget Amendment

Function	Object	Description	2026 Budget	Decreases	Increases	Amended Budget
34570		Restricted for Operation of Non-Instructional	19,884,873	2,000,000		17,884,873
Total Fund Balance			19,884,873	2,000,000	0	17,884,873

Function	Object	Description	2025 Budget	Increases	Decreases	Amended Budget
99100	590	Food Service - Transfer to Other Funds		- 2,000,000		2,000,000
99100 Total				- 2,000,000	-	2,000,000
			33,487,092	2,000,000	-	35,487,092

This FY25-26 Centralized Cafeteria Fund amendment increases 99100-504 Indirect Cost and decreases 34570- Restricted Fund Balance in the amount of \$2,000,000 to budget for indirect costs that are accumulated in Fund 141 being reimbursed by Fund 143. Indirect costs are incurred for the benefit of multiple programs, functions, or other cost objectives and cannot be readily identified as having been incurred specially for the school food service program. Indirect cost rates are calculated annually by TDOE and Child Nutrition Programs use the unrestricted indirect cost rate. The FY25-26 unrestricted indirect cost rate for RCS is 11.19%.

Recommended Motion:

To approve the Fiscal Year 2025-26 Fund 143 year-end clean up amendment as presented.

Dr. James Sullivan, Director of Schools

Date

Claire Maxwell, Chairman of the Board

Fund 141 - General Purpose School

Budget Amendment #9

Function	Object	Description	2026 Budget	Summer Camp		Amended
				Decreases	Increases	Budget
46590		Other State Education Funds	9,700,000		5,556,938	15,256,938
Total Revenue & Operating Transfers			588,757,031	0	5,556,938	594,313,969

Function	Object	Description	2026 Budget	Increases	Decreases	Amended Budget
71100	116	Reg Education Prg - Elem/Sec - Teachers	216,294,795	1,572,750		217,867,545
71100	163	Reg Education Prg - Elem/Sec - Educational Assistants	7,766,731	200,375		7,967,106
71100	201	Reg Education Prg - Elem/Sec - Social Security	13,451,386	109,934		13,561,320
71100	204	Reg Education Prg - Elem/Sec - Pensions	13,048,163	182,632		13,230,795
71100	212	Reg Education Prg - Elem/Sec - Employer Medicare	3,145,830	25,710		3,171,540
71100	217	Reg Education Prg - Elem/Sec - Retirement - Hybrid Stabilization	1,000,000	10,000		1,010,000
71100	429	Reg Education Prg - Elem/Sec - Instructional Supp & Mat	2,700,000	1,889,222		4,589,222
71100	722	Reg Education Prg - Elem/Sec - Regular Instruction Equipment	225,000	842,832		1,067,832
71100 Total			298,932,654	4,833,455	0	303,766,109
72120	131	Health Services - Medical Personnel	5,085,851	57,250		5,143,101
72120	201	Health Services - Social Security	337,506	3,550		341,056
72120	204	Health Services - Pensions	363,033	5,897		368,930
72120	212	Health Services - Employer Medicare	78,933	830		79,763
72120	217	Health Services - Retirement - Hybrid Stabilization	30,000	1,000		31,000
72120 Total			7,490,420	68,526	0	7,558,946
72130	399	Other Student Support - Other Contracted Services	1,213,326	30,000		1,243,326
72130 Total			21,898,500	30,000	0	21,928,500
72210	524	Regular Instruction Program - In Service/Staff Development	225,000	40,000		265,000
72210 Total			16,574,792	40,000	0	16,614,792
72410	104	Office Of The Principal - Principals	6,788,509	60,885		6,849,394
72410	162	Office Of The Principal - Clerical Personnel	2,785,828	27,675		2,813,503
72410	201	Office Of The Principal - Social Security	1,595,654	5,491		1,601,145
72410	204	Office Of The Principal - Pensions	1,950,451	9,122		1,959,573
72410	212	Office Of The Principal - Employer Medicare	373,177	1,284		374,461
72410	217	Office Of The Principal - Retirement - Hybrid Stabilization	11,000	500		11,500
72410 Total			34,284,133	104,957	0	34,389,090
72710	312	Transportation - Contracts W/Private Agencies	200,000	30,000		230,000
72710	315	Transportation - Contracts W/Vehicle Owners	33,688,202	450,000		34,138,202
72710 Total			37,236,005	480,000	0	37,716,005
Fund 141 Total			606,524,905	5,556,938	0	612,081,843

This amendment is to increase Fund 141 budgeted revenues and expenditures in the amount of \$5,556,938 to recognize the awarded Summer Camp Grant for FY25-26. On January 22, 2021, the Tennessee General Assembly enacted the Tennessee Learning Loss Remediation and Student Acceleration Act to address the learning loss of students due to COVID-19 related school closures. Through this law, all Tennessee school districts were required to offer learning loss remediation summer programs for students in rising grades K - 8, starting in summer 2021. Provisions of this law that were set to expire in summer 2023 included Summer Learning Camps for rising grades 1 - 3 and After School Summer Learning Mini Camps (STREAM camps). However, in the 2023 Legislative Session, the Tennessee General Assembly amended the Act to continue summer programming (Summer Learning Camps, After School Summer Learning Mini Camps (STREAM), Learning Loss Bridge Camps, and Summer Camp Transportation) for rising grades K-9 annually. The funds will be used fund summer work for principals, teachers, education assistants & secretaries. There is no local match required for this grant.

Recommended Motion:

To amend budgeted revenues & expenditures in Fund 141 General Purpose in the amount of \$5,556,938 as presented.

 Dr. James Sullivan, Director of Schools

 Date

 Claire Maxwell, Chairman of the Board